

Air SyncHD

1080p Video/Audio Wireless Transmission Kit

BV-2322



BV-2322T

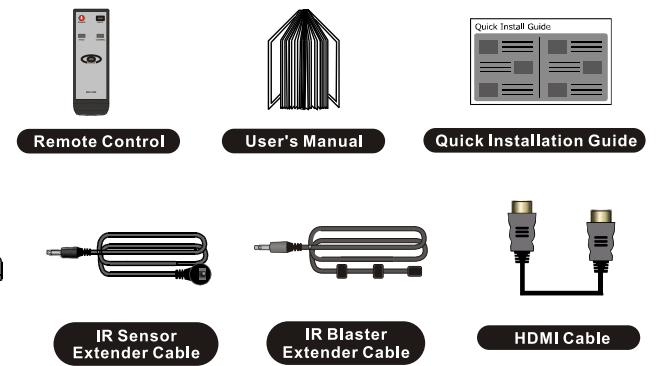
HD Video Wireless Transmitter

BV-2322R

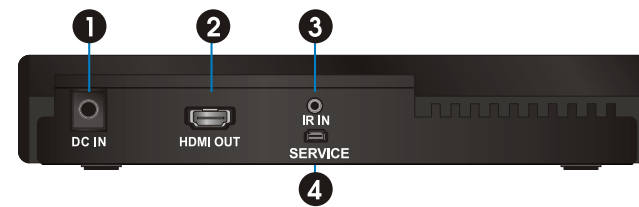
HD Video Wireless Receiver

Quick Installation Guide

Part 1 Package Content and Connectors

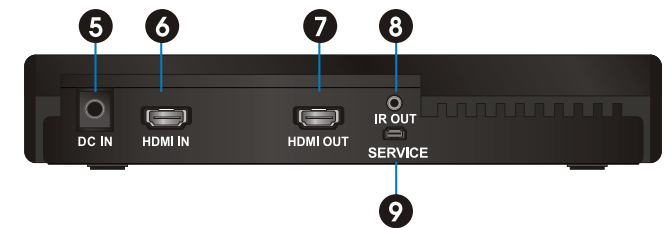


Rear View of BV-2322 receiver



- 1 DC IN
- 2 HDMI OUT
- 3 IR IN
- 4 Service Port

Rear View of BV-2322 transmitter



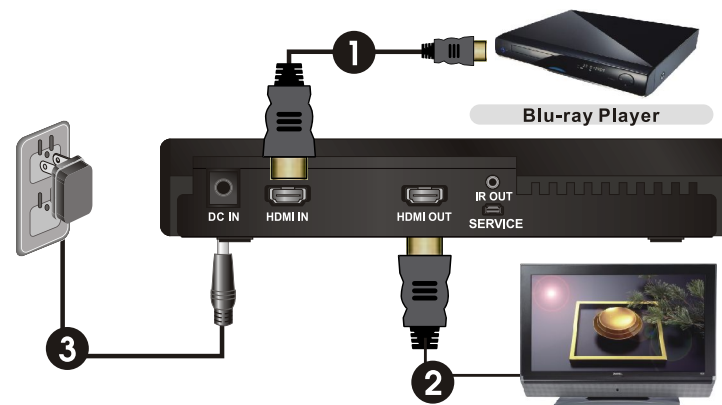
- 5 DC IN
- 6 HDMI IN
- 7 HDMI OUT
- 8 IR OUT
- 9 Service Port

Part 2 Quick Installation Description

Hardware Installation

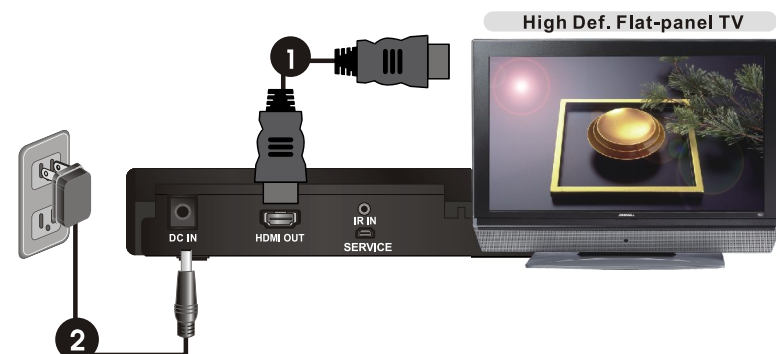
BV-2322T (transmitter) Connections:
HD video/audio sources can be connected to the transmitter via the "HDMI IN" ports

- 1 Connect the HD A/V source to BV-2322T's (transmitter) "HDMI IN" port. If the loop-through connection is desired, connect your HDTV to the BV-2322T's "HDMI OUT" port.
- 2 Connect your first or primary HDTV to BV-2322T's "HDMI OUT" port, if the loop-through connection is desired. The loop-through connection enables a 2nd HDTV to receive the same content from the HD A/V source connected to the BV-2322T.
- 3 Plug in the power adaptor to the BV-2322T (transmitter) and the red POWER LED should be lit in red.



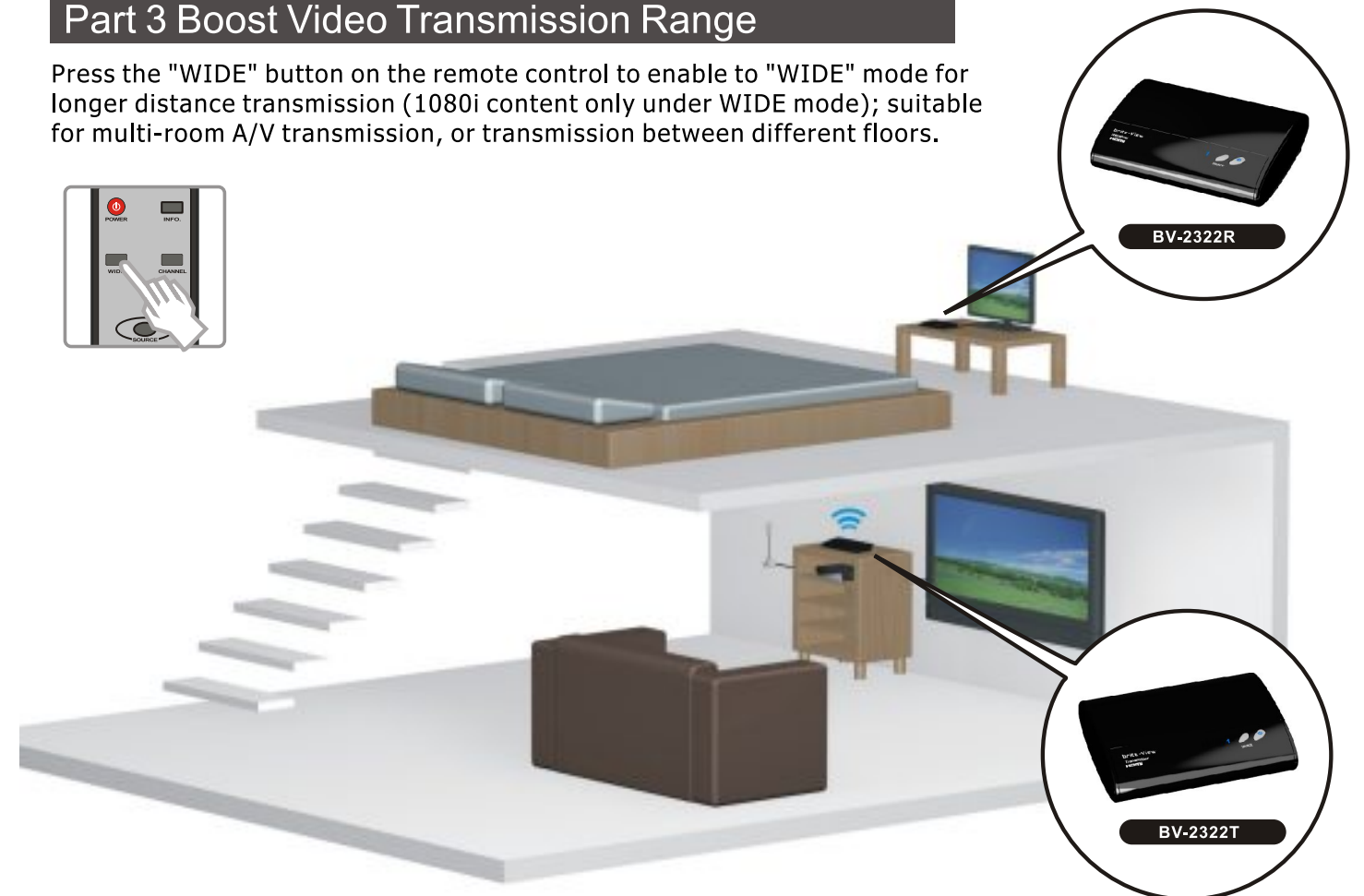
BV-2322R (receiver) Connections

- 1 Connect the "HDMI OUT" port of the BV-2322R (receiver) to the "HDMI IN" port of the HDTV with an HDMI cable.
- 2 Connect the BV-2322R (receiver) to another HDTV via "HDMI OUT".



Part 3 Boost Video Transmission Range

Press the "WIDE" button on the remote control to enable to "WIDE" mode for longer distance transmission (1080i content only under WIDE mode); suitable for multi-room A/V transmission, or transmission between different floors.



Part 4 IR Blaster and Extender Setup

If the Infrared (IR) Blaster & Sensor (included) are connected to the BV-2322T and BV-2322R so you can point hand-held remote controls of your HD A/V equipment at the BV-2322R (receiver) or at your HDTV instead of at the A/V equipment. The transmission distance is 66 feet, line-of-sight.



Part 5 Remote Control Unit Instruction

Place the two AAA batteries into the remote control.

| Button | Function Description | Operation |
|-------------------------------------|--|--|
| POWER | Press to turn the BV-2322 Transmitter/Receiver on/off. | Press it when pointing at the BV-2322R to enter the "Standby Mode" with the loop-through connection is already on; press it when pointing at the BV-2322T to enter the "Standby Mode" with the loop-through connection is off. |
| INFO. | Press to display between "Channel", "Source", "Resolution", "WIDE mode" and "Signal Quality" | Press once to display the current status. Press again to exit OSD. |
| SOURCE | Press this button to change the frequency of IR blaster among 38KHz, 47Kz and 58KHz. Default frequency is 47KHz . | Press once to display the current frequency of IR blaster. Press again to change to next frequency, and the frequency will be displayed on the OSD. |
| CHANNEL | Press this button to change between wireless channels manually if the user experiences video noise. | Press once to display the current "Channel" status. Press again within 5 seconds to switch to another channel, and the channel number will be displayed on the OSD. |
| WIDE (1080i content only) | Press this button to boost video transmission distance wirelessly. The default setting is to have this feature disabled. | Press this button to enable and disable Wide mode. Press again within 5 seconds to enable WIDE mode, and the status will be displayed on the OSD. |

Part 6 Operation

Activate the BV-2322 and Set up the Link

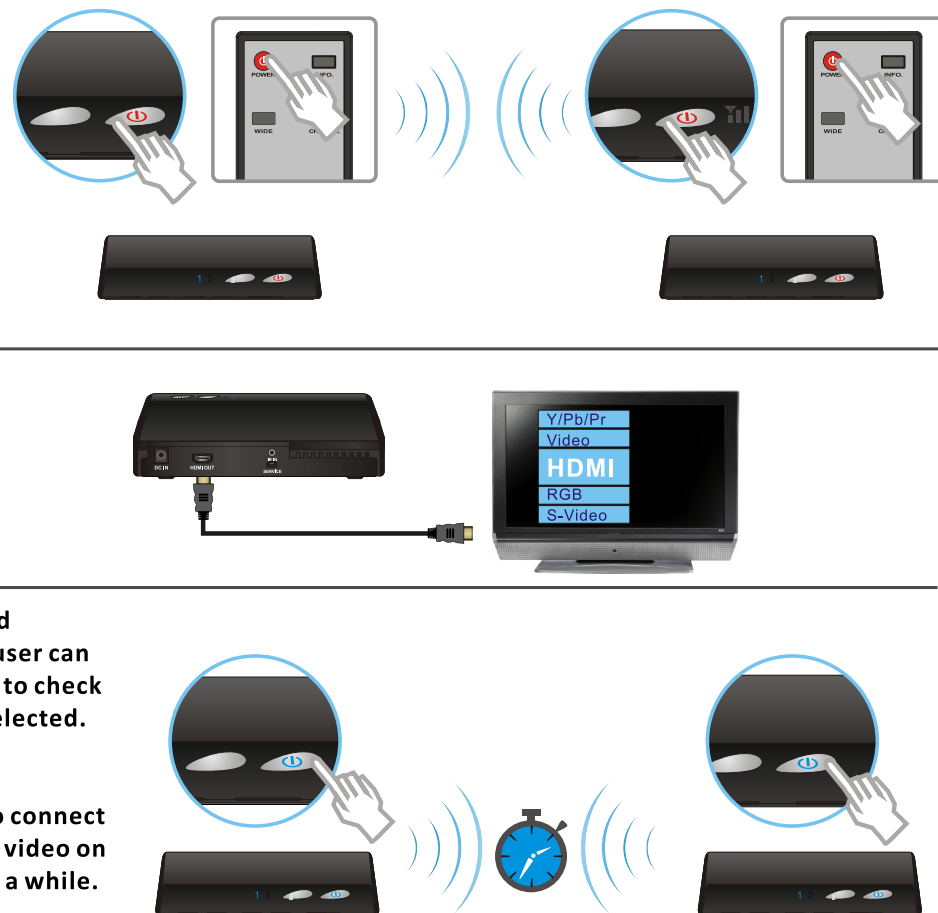
Press the **POWER** button on the remote control or on the top of the BV-2322R and BV-2322T to turn on the transmitter and receiver.

Power on your TV set and go to the source menu under the settings menu of your HDTV set. Then select the HDMI input to which the BV-2322 receiver is connected.

If all operation is normal, the **POWER LED** and **SOURCE LED** will be lit in solid blue, and the user can press the **INFO** button on the remote control to check the status of signal quality and A/V source selected.

Note :

The wireless link might require 80 seconds to connect between transmitter and receiver, and show video on the TV screen. Please be patient and wait for a while.



NOTE:

If you have electronic devices such as cordless phones, wireless AC points/routers operating in the 5GHz band and near the BV-2322, the audio/video quality on the display or TV may suffer. Press the "CHANNEL" button twice on the remote control to switch to an appropriate channel for the BV-2322.



Part 7 Limited Warranty

This limited warranty (hereinafter the Warranty) is valid for the BV-2322 (hereinafter the Product). The Warranty is only valid in the country where the Product was originally purchased.

- The Warranty only covers manufacturing defects, and excludes defects caused by the inappropriate use or storage of the Product.
- The Warranty is issued by Xpike Innovation, Inc. to the end purchaser (hereinafter the Customer) of the Product.
- In accordance with the Warranty, the Customer has a sole claim to demand repair or replacement of the Product but may not assert claims or seek compensation against the manufacturer/retailer for further losses (including, but not limited to, the indirect loss of data or profit).
- The Warranty provides coverage over a period of 12 months, commencing from the initial purchase date of the Product by the Customer of Xpike Innovation. Subsequent changes of ownership do not extend the warranty period.
- The Warranty is valid with the proviso that the Product is shipped to Xpike Innovation within the warranty period. In the event of any faults or defects with the Product, it must be shipped back to Xpike Innovation. Products will be repaired or exchanged at Xpike Innovation's own discretion. The warranty period is not extended for any repaired or replaced Products. Exchanged parts are the property of Xpike Innovation, Inc.
- The Warranty is valid solely on the condition that the original proof of purchase issued is presented with the Product.

brite-View, the brite-View logo, are trademarks of Xpike Innovation Inc., registered in USA.

For detailed operating instructions, please visit www.brite-view.com to download the user manual.

Email service@brite-view.com or visit www.brite-viewforum.com for tech support.