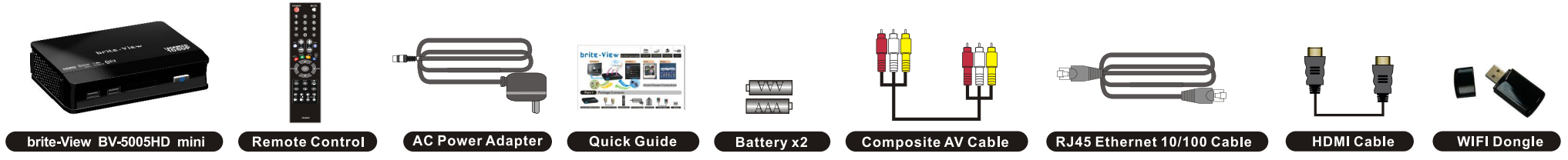
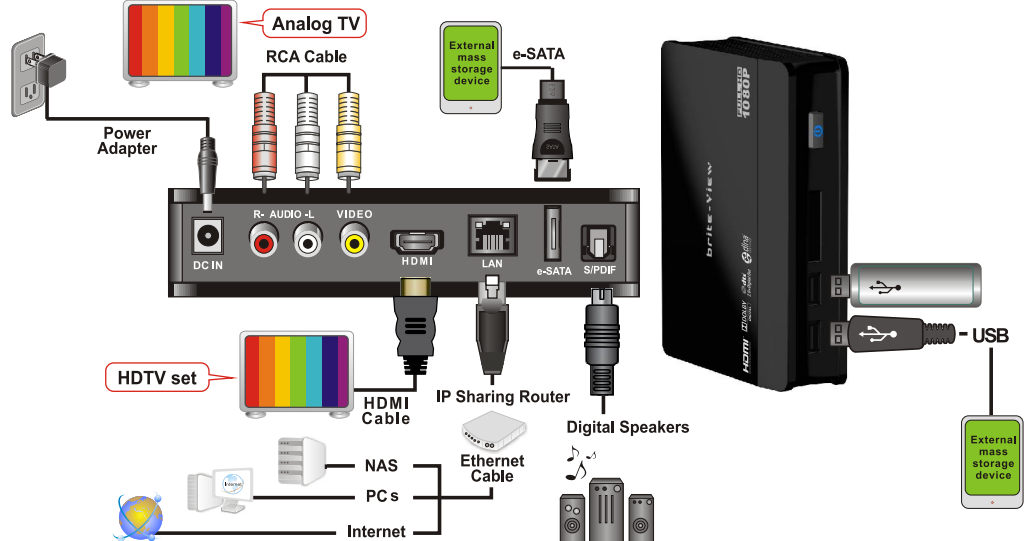


## Part 1 Package Contents



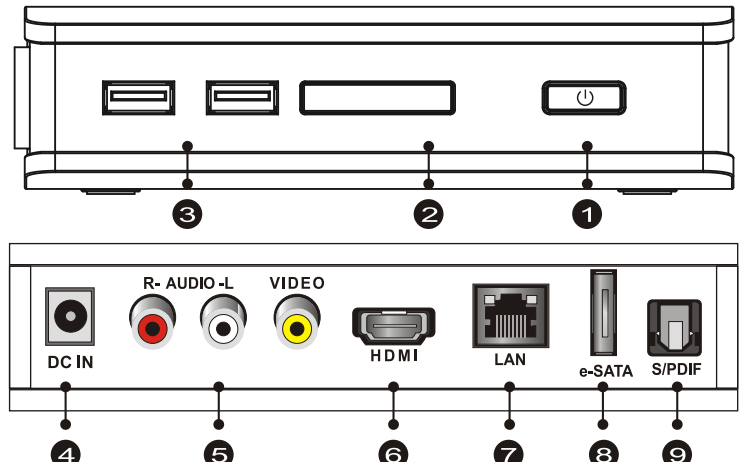
## Part 2 Quick Installation Description

- You need:
- Standard or HD TV with HDMI or composite audio/video input
  - USB storage device with a USB 2.0 connector
1. Connect BV-5005HD mini to your TV (or display) through the desired interface
  2. Connect the power cable to BV-5005HD mini
  3. Connect the USB device containing your media content to BV-5005HD mini Optional: Connect the Ethernet Cable (or Wi-Fi USB dongle) for downloading media content from the internet or streaming media content from your remote computers (shared in the network)



**Note:**  
Press "Source" or "Input" button on TV remote control to switch the video output to the corresponding TV interface option.

## Part 3 Interface (front / rear panel) / Remote Control

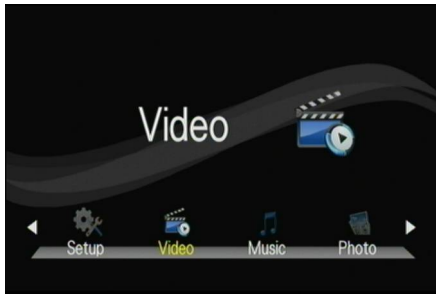


- 1 **Power button:** Press to turn on the BV-5005HD or switch to standby mode
- 2 **LAN LED :** On in blue : Ethernet cable (or USB WiFi dongle) detected and connected to wired LAN or wireless network.
- 3 **USB Ports :** Connect to removable storage devices, portable media players, WiFi-dongles and digital cameras with USB connectors
- 4 **DC IN :** Connects to the power cable
- 5 **VIDEO (Audio L/R):** Connects to VIDEO (Yellow) / AUDIO L(White)/R (Red) cables to your TV's (or display's) analog video and audio ports
- 6 **HDMI OUT :** Connects HDMI cable to TV's (or display's) HDMI port
- 7 **LAN :** Connects to supported e-SATA devices (e.g. hard drives with e-SATA interface)
- 8 **e-SATA :** Connects to supported e-SATA devices (e.g. hard drives with e-SATA interface)
- 9 **S/PDIF :** Connects optical digital audio (S/PDIF) cable to digital sound system.



1. **POWER** Turn the unit on or switch it to the stand-by mode
2. **HOME** Go to the main menu
3. **Number 0-9** Number keys for selecting desired options.
4. **GOTO** Video/movie chapter selection.
5. **MUTE** Press to mute the sound.
6. **VOL +/-** Increase/decrease the volume.
7. **CHANNEL +/-** Reserved keypad.
8. **ZOOM +/-** Zoom in or out of the video or image in display.
9. **SUBTITLE** Switch subtitle files.
10. **AUDIO** Switch audio outputs.
11. **INFO** Display the information of the media file in playback.
12. **SETUP** Enter setup menu.
13. **BACK** Return to the previous menu.
14. **OK** Confirm or select.
15. **STOP** Stop playback and return to the previous screen.
16. **PLAY/ PAUSE** Play/pause selected file.
17. **MULTI-FUNCTION BUTTONS** Refer to the instructions in the screen.
18. **SLOW PLAY** Play video in slow motion
19. **PREV** Return to previous file.
20. **NEXT** Go to next file.
21. **REPEAT** Enable/disable repeat of file playback.
22. **REPEAT A-B** Press once to mark desired repeat point A; press again to mark repeat point B; press yet again to turn this feature off
23. **L/R** Enable/disable Left/Right speaker.
24. **ANGLE** Switch DVD display angles.
25. **DVD MENU** Show DVD Menu.
26. **ASPECT** Adjust aspect ratio

## Part 4 On-Screen-Display



### Main Menu

- 1. Video:** Select this option for video watching.
- 2. Music:** Select this option for music listening.
- 3. Photo:** Select this option for photo viewing.
- 4. Bonus Feature: s** Select this option to enter Torrent Download.
- 5. Setup:** Customize your CinemaTube by setting media playback preferences, configuring the network and updating the software.



### Setup Menu

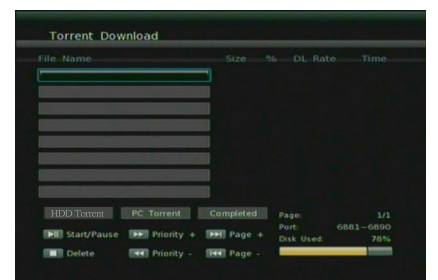
- 1. Audio:** select this to change audio configuration.
- 2. Video:** select this to change video configuration.
- 3. Network:** select this to change network configuration and obtain an IP address for the Internet access.
- 4. System:** Select this to change the BV-5005HD Mini's general system configuration
- 5. Other:** Select this option to change other subsidiary settings

## Part 5 Download Media

BitTorrent is one of the most common peer-to-peer file-sharing (P2P) communication protocols for transferring large files. With the built-in BitTorrent client/engine, BV-5005HD mini makes downloading media files quick and easy. You can then enjoy the downloaded content in the comfort of the living room, without having to turn your computer on.

This BitTorrent support option can be activated by switching to "Download Media" option while browsing the OSD home menu. To enable this option, your USB storage devices are suggested to have at least 20 GB free space and be in the format of NTFS (Windows NT File System) or EXT3 (Third Extended File System). You can browse the web to find a torrent (a file extension used by a BitTorrent Client) of interest, download it to your USB storage devices or remote computers (shared in the network). Upon reading the torrent files from your USB storage devices or remote computers (shared in the network), the built-in BitTorrent Client in BV-5005HD mini will begin to download media files. You can add up to 35 torrent files to the downloading queue and prioritize them. BV-5005HD mini will download up to 3 media files at the same time according to the priority you set. While downloading, the size, speed and remaining time of the download will be shown on the screen.

Please visit [www.brite-view.com](http://www.brite-view.com) for more information of the "Download Media" feature. You can also download the clean torrent files demonstrated on our website to test out this feature on your BV-5005HD mini.



## Part 6 Specifications

SPECIFICATIONS		BV-5005HD mini
<b>Exterior Interface</b>		HDMI, Composite, Audio L/R, Optical, e-SATA, 2* USB ports, LAN port.
<b>Supported Video Formats</b>		MPEG 1/2/4, Divx 3/4/5/6, Xvid, H.264 /AVC, VC-1, WMV9, RM/RMVB 8/9/10 (avi, mkv, ts, m2ts, tp, ifo, iso, vob, dat, mpg, mp4,mpeg, mov, wmv, asf, flv, rm, rmvb)
<b>Supported Audio Formats</b>		MP3, MPEG Audio, Dolby Digital, DTS, WMA, PCM, LPCM, ADPCM, FLAC, WAV, AAC, RA, OGG, MKA
<b>Supported Image Formats</b>		HD JPEG, GIF, PNG, BMP, TIF, TIFF
<b>Subtitle Format Compatibility</b>		srt, sub, smi, ssa, idx+sub
<b>HDD Format Compatibility</b>		NTFS ,FAT32, FAT, EXT-3, HFS+
<b>Screen Aspect Ratio</b>		4:3 or 16:9
<b>Media Storage Device Support</b>		External USB Hard Drive Support with USB and E-SATA Interface
<b>High Definition Decoding</b>		1920 x 1080p
<b>Software Update</b>	<b>USB</b>	Yes
	<b>Online</b>	Yes
<b>Possible for Feature Application Enhancement</b>		Yes
<b>Power</b>		AC-DC Adapter 5V, 3.0A, 15W
<b>Dimensions (W*H*L)</b>		103mm*36mm*140mm

\*Specifications are subject to change without notice.

## Part 7 Limited Warranty

**This limited warranty (hereinafter the Warranty) is valid for the BV-5005HD mini (hereinafter the Product). The Warranty is only valid in the country where the Product was originally purchased.**

- The Warranty only covers manufacturing defects, and excludes defects caused by the inappropriate use or storage of the Product.
- The Warranty is issued by Xpike Innovation. Inc. to the end purchaser (hereinafter the Customer) of the Product.
- In accordance with the Warranty, the Customer has a sole claim to demand repair or replacement of the Product but may not assert claims or seek compensation against the manufacturer/retailer for further losses (including, but not limited to, the indirect loss of data or profit).
- The Warranty provides coverage over a period of 12 months, commencing from the initial purchase date of the Product by the Customer of Xpike Innovation. Subsequent changes of ownership do not extend the warranty period.
- The Warranty is valid with the proviso that the Product is shipped to Xpike Innovation within the warranty period. In the event of any faults or defects with the Product, it must be shipped back to Xpike Innovation. Products will be repaired or exchanged at Xpike Innovation's own discretion. The warranty period is not extended for any repaired or replaced Products. Exchanged parts are the property of Xpike Innovation .Inc.
- The Warranty is valid solely on the condition that the original proof of purchase issued is presented with the Product.

## Part 8 Trademarks and Company Information

**brite-View** , the brite-View logo, are trademarks of Xpike Innovation Inc., registered in USA.

For detailed operating instructions, please visit [www.brite-view.com](http://www.brite-view.com) to download the user manual.

Email [service@brite-view.com](mailto:service@brite-view.com) or visit [www.brite-viewforum.com](http://www.brite-viewforum.com) for tech support.