

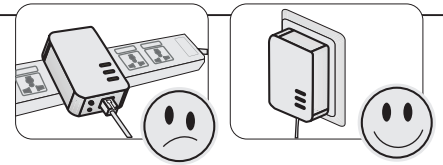
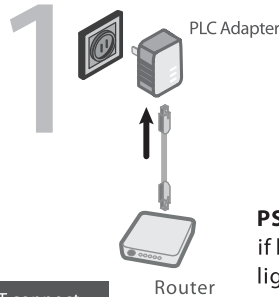
Hardware Installation

PLC Adapter

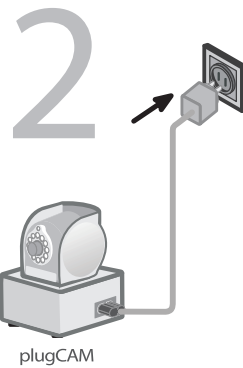
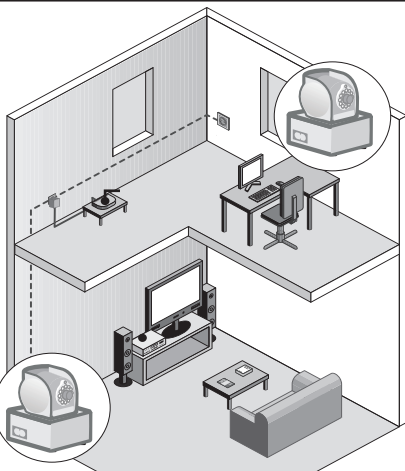
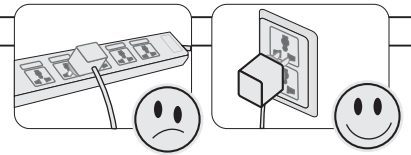
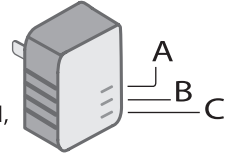
Step 1: Connect PLC adapter and router with Ethernet cable. Power PLC adapter to an electrical outlet.

PS: For Camera only package, please make sure that you have PLC adapter available for your camera.

WARNING: If you have PLC network available in the house, DO NOT connect the PLC adapter with your router that is occupied with the other PLC device.



PS: After Camera is powered, if both the A & C LED lights on PLC adapter shows steady motion, and B LED light is blinking, you are successfully connected.



The plugCAM Camera

Step 2: Place your plugCAM camera anywhere in the house and power on camera. Then, the plugCAM camera and PLC adapter will auto connected.

PS: While the camera is being accessed, you may check whether the camera IR LED lights are working properly by covering the light sensor above lens and see if IR LED bulbs turn red.

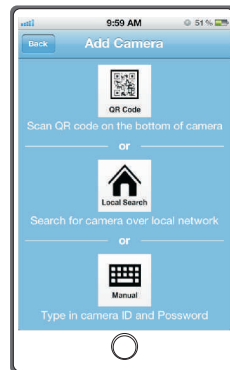
Install The plugCAM App

The plugCAM App

Step 1: Search for the plugCAM App on Apple store or Google Play and download the App to your mobile device.



PS: To download plugCAM PC software, please visit the official website for further information.



Add The plugCAM Camera

Three Methods to Add Cameras

- Option 1:** Scan QR code on the bottom of camera.
- Option 2:** Search camera over the same local network.
- Option 3:** Manually type in camera ID and password.

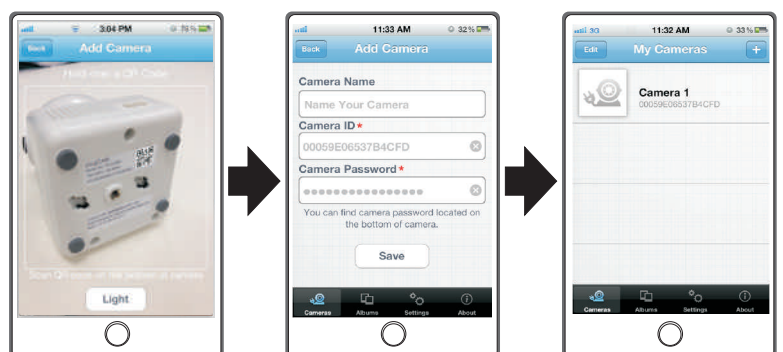
QR Code Scan (Ideal for first time setting and have camera in hand)

WARNING: "QR Code Scan" might not be supported by some mobile devices.

Step 1: Click **Add Camera** and choose **"QR Code"** icon on the screen to scan QR Code that is located on the bottom of camera. Then, Camera ID and password will show up on the screen.

Step 2: Name your Camera (optional) and click **"Save"** icon. Once saved, the new camera will be added into **"My Cameras"**.

PS: To add camera by scanning QR code on the bottom of camera, please make sure that your camera has been reset to the factory settings.



Local Search (The Camera and mobile device are under the same local network)

Step 1: Make sure your camera and mobile device are under the same network, then click “**Local Search**” to search new camera. Once found the new camera, you can choose the camera you want to add.

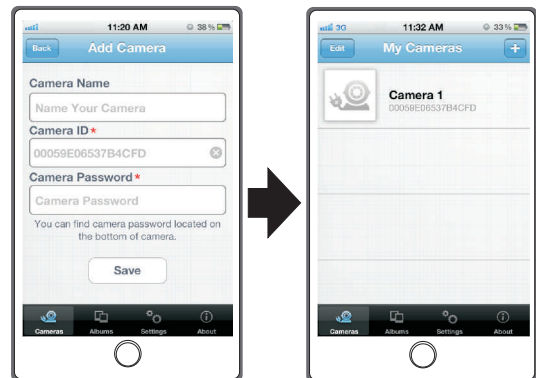
Step 2: Name your camera (optional), enter password and click “**Save**”. Once saved, the new camera will be added into “**My Cameras**”.



Manual (Manually type in Camera ID and password)

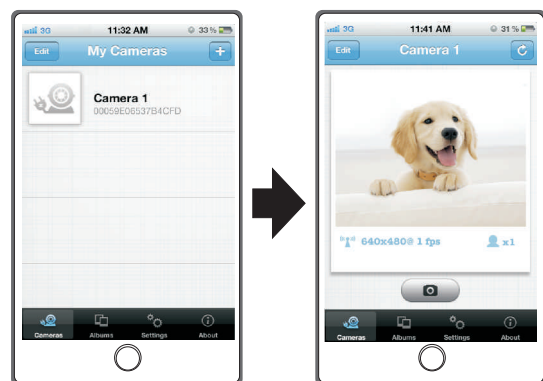
Step 1: Click Add Camera and choose “**Manual**” icon on the screen.

Step 2: Name your camera (optional), enter camera ID & password and click “**Save**”. Once saved, the new camera will be added into “**My Cameras**”.



Monitoring

Step 1: Choose the Camera you want to access on “**My Cameras**”. Then, your mobile device will start connecting to your camera.



Note: For First Time Setup (Saved password is same as the default password)

Step 1: Connect to the camera with the default password.

Step 2: You will need to create new password and press apply button on the screen before accessing your camera.

PS: For the safety purpose, you will be asked to create new password when you connect to camera with the default password.

