

CinemaTube Mini

HD Media Player/Streamer/Torrent Downloader

User's Manual

BV-5005HD mini **HD 1080p**

real



Safety Instructions

This product has been engineered and manufactured to assure your personal safety. However, improper use can result in potential electric shock or fire hazards. In order not to defeat the safe-guards incorporated in this instrument and its accessories, please adhere to the following instructions when installing, operating and servicing.

Power Source Warning

- A marking label attached on the rear side of the adapter (supplied) indicates the correct power source for this equipment. Operate this product only from an electrical outlet with the voltage and frequency indicated on the product label. Incorrect power source may result in a risk of electric shock or fire. If you are uncertain of the type of power supplied to your home, consult your local power company or appliance dealer.
- Only use the power cord and adapter provided by the manufacturer. Internal component may be damaged if you use a different adapter to power this product. To avoid electric shock and fire hazard, match the plug and outlet connections carefully, then fully insert. If the plug fails to fit the outlet, please contact an electrician to update your power outlets.
- Do not overload electrical outlets, extension cords, or integral convenience receptacles as this can result in a risk of fire or electric shock. And to prevent power cord damage, arrange all power cords so that people cannot walk on the cords. Do not place objects on the cords.
- Place this product in a location that is close enough to an electrical outlet and where the power cord is easily accessible to be disconnected from the wall outlet.

Usage Warning

- To reduce the risk of electric shock, do not remove the cover or attempt to disassemble this product. There are no user-serviceable parts inside. Please refer all servicing to qualified service personnel.
- Protect this product from foreign objects. Never push object of any kind into this product through openings as they may touch dangerous voltage points or short-out parts that could result in a fire or electric shock.
- Do not expose this product to liquids, rain or moisture.
- This product has ventilation openings that protect it from overheating. Never block or cover these openings. And do not place this product near heat sources such as radiators, heat registers, stoves or other products producing heat.
- Before cleaning or wiping this product, make sure your power cord is already unplugged from the electrical outlet. Only use damp cloth to clean this product, and never use a liquid cleaner or an aerosol cleaner.
- During a thunderstorm, or when this product is unused for long periods of time, unplug power cord from the wall outlet. This will prevent damage to the product due to lightning and power-line surges.

Service Warning

- Refer all servicing to qualified service personnel. For damage that requires service, please unplug your power cord from the AC outlet first, and contact your dealer or servicing personnel to obtain service for the following conditions.
 - If there is damage to the adapter, power cord or plug.
 - If liquid enters this product.
 - If you drop this product, a heavy object falls on this product, or damage occurs to the cover of this product.
 - If you expose this product to rain or water.
 - If this product does not operate normally by following the operating instructions.
 - If this product exhibits a distinct change in performance.

Caution

Risk of explosion if battery is replaced by an incorrect type. Dispose of used batteries according to the instructions.

Copyright Notice

- No part of this user's manual may be copied, translated, or reproduced including electronic form without permission from the copyright owner. We have made effort to ensure the accuracy and completeness of this document. However, as ongoing development is continually improving the capabilities of our products and the content described in this manual may be changed at any time, we cannot guarantee the accuracy of the content of this document. We disclaim liability for errors, omissions, or future changes. The information of this document is subject to change without notice.

This device complies with Part 15 of the FCC Rules. Operation is subject to the following two conditions:

- (1) This device may not cause harmful interference.
- (2) This device must accept any interferences received, including interference that may cause undesired operation.

License Notice and Trademark Acknowledgement

Dolby Digital:

Manufactured under license from Dolby Laboratories. Dolby and the double-D symbol are trademarks of Dolby Laboratories.

Table of Contents

| | |
|---|-----------|
| 1 Introduction | 3 |
| Package Content | 3 |
| Specification | 4 |
| Front View | 5 |
| Back View | 5 |
| Remote Control | 6 |
| 2 Installation..... | 7 |
| Cable Connections..... | 7 |
| Internet Connections | 7 |
| Connect USB Devices | 9 |
| Power Cord Connection | 9 |
| Switch your TV Input/Source..... | 9 |
| 3 Network Connections | 10 |
| Wired LAN Setup..... | 11 |
| Wireless Network Setup..... | 12 |
| PPPoE | 14 |
| BT Download..... | 15 |
| Samba Process (Simple NAS) | 18 |
| BT & Samba Security..... | 18 |
| File sharing Configuration | 19 |
| 4 Play Media | 28 |
| Video Playback..... | 30 |
| Music Playback..... | 31 |
| Photo Playback | 32 |
| 5 Internet Media | 33 |
| Picasa | 33 |
| Flickr..... | 33 |
| YAHOO Weather..... | 33 |
| YAHOO Finance | 34 |
| 6 Setup..... | 35 |
| System..... | 36 |
| Audio | 37 |
| Video | 38 |

| | |
|--------------------------------|-----------|
| Other | 39 |
| 7 Troubleshooting | 40 |

1

Introduction

The Product is a high-definition multimedia player and streamer connecting to the external USB hard drives and the HD TV, bringing PC and internet entertainment to the living room. It supports most video/audio/image formats so you do not need to convert downloaded media to another format. You can plug in your USB devices to the Product to play music, movies and pictures on TV by following the on-screen display (OSD) menu. The Product can also access the shared folders on the remote PCs through the intranet (local area network) and play the digital media files there on your TV. It also supports high-definition media playback with HDMI output.

Package Content

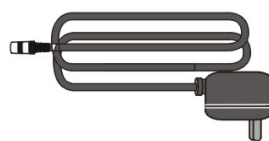
Please make sure the following items are included within your new THE PRODUCT package. If any item is missing or damaged, please email us at service@brite-view.com. THE PRODUCT might not be compatible with some accessories made by other manufacturers. We highly recommend that you use only the specific accessories we suggest.



brite-View BV-5005HD mini



Remote Control



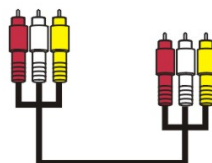
AC Power Adapter



Quick Guide



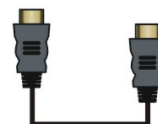
Battery x2



Composite AV Cable



RJ45 Ethernet 10/100 Cable



HDMI Cable

Specification

Interfaces

Video Output HDMI 、 Composite Video

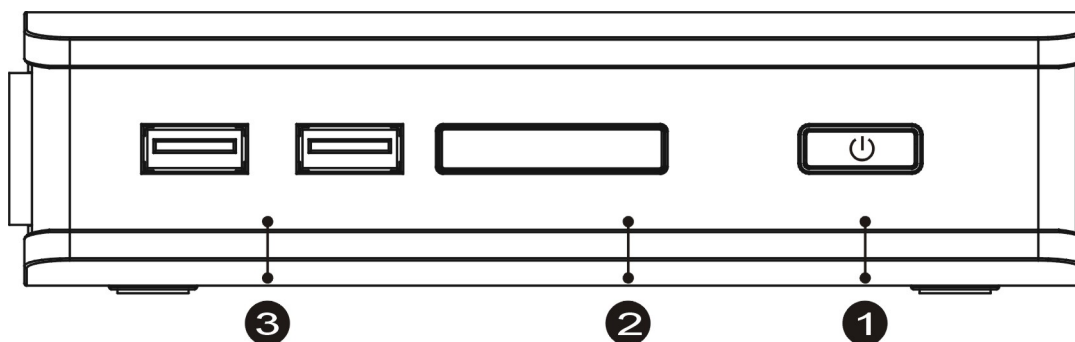
Audio Output Audio L/R 、 S/P DIF (Optical)


Data Transfer e-SATA 、 USB x 2 、 Ethernet Port

General Specifications

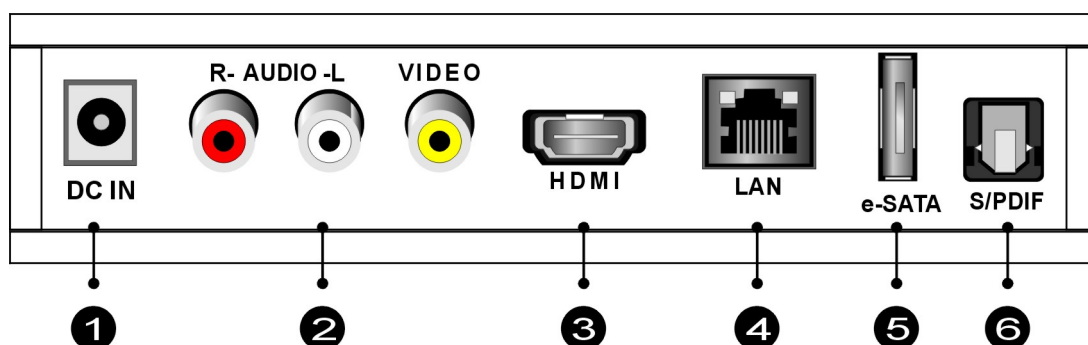
| | | |
|-----------------------------|-------------------------|---|
| Support Media Format | Video | MPEG1 (AVI/MKV/TS/DAT/MPG/MPEG/VOB) |
| | | MPEG2 |
| | | (MKV/DAT/MPG/MPEG/VOB/ISO/IFO/TS/TP)/M2TS |
| | | MPEG4 (AVI/MP4/MKV/MOV/WMV/ASF) |
| | | DivX 3/4/5/6 、 Xvid (AVI/MKV/MP4/MOV) |
| | | H.264/AVC |
| | | (TS/AVI/MP4/MKV/MOV/FLV)/M2TS |
| | | VC-1 (TS/AVI/ASF/WMV)/M2TS |
| | | WMV9 (ASF/WMV) |
| | | Real Video 8/9/10 (RM/RMVB) |
| | Audio | MP3 、 MPEG Audio 、 Dolby Digital 、 DTS 、 WMA 、 PCM 、 LPCM 、 ADPCM 、 FLAC 、 WAV 、 AAC 、 RA 、 OGG 、 MKA |
| | Photo | HD JPEG 、 GIF 、 PNG 、 BMP 、 TIF 、 TIFF |
| | Subtitle | SRT 、 SMI 、 SUB 、 SSA 、 IDX+SUB |
| | HDD Device File Systems | EXT3 、 NTFS 、 FAT16/32 、 HFS+ |
| | | |
| Decoding | | Up to 1080p (RMVB up to 720p) |
| Output | | Up to 1080p |
| Power Supply | | 100~240V ±10% input voltage/ 5V @ 3A |

Front View



| | | |
|---|-------------|---|
| ① | Power |  Press to turn the Product on. |
| ② | Network LED | The LED blinks when The Product accesses to Network. |
| ③ | USB Port | Plug the supported USB devices into USB ports, such as USB hard drives, cameras, camcorders and wireless USB dongles. |



Back View



| | | |
|---|---------------------|--|
| ① | DC IN | Connects to the DC output of the power adapter. |
| ② | AUDIO L/R/ VIDEO | Connects to the display with the VIDEO IN/ AUDIO L/R IN jacks on the display using VIDEO (Yellow)/ AUDIO L (White)/R (Red) cables. |
| ③ | HDMI OUT | Connects to the HDMI jack on the display; a single cable transmits both audio and video data. |
| ④ | LAN | Connects to the RJ-45 Ethernet 10/100 based network. Not compatible with the telephone line. |
| ⑤ | e-SATA | Plug the supported e-SATA devices into e-SATA ports, such as e-SATA hard drives. |
| ⑥ | S/PDIF | Connects the Product to a display that has an optical digital audio port, using an optical digital audio (also called S/PDIF) cable. |

Remote Control



| | |
|---|---|
|  | Press to turn on the Product; press again to switch to stand-by mode. |
| POWER | |
| MUTE | Press to mute the sound. |
| Numeric Buttons | 0-9 number keys for selecting desired options. |
| GOTO | Video/movie chapter and time point selection. |
| | Display the information of media files while in play mode. |
| BACK | Return to the previous display. |
| VOL + / - | Increase/decrease the volume. |
| CH + / - | Reserved keypad for further application. |
| HOME | Hot key to the main OSD menu. |
| REPEAT A-B | Press once to mark desired repeat point A; press again to mark desired repeat point B; press yet again to turn this feature off |
| REPEAT | Enable/disable repeat of file playback. |
| ANGLE | Switch DVD display angles. |
| DVD MENU | Press to pop up the special function list on different mode. |
|  | Navigate through menu screen or media libraries. |
| OK | Confirm or select. |
| ASPECT | Adjust aspect ratio |
| SETUP | Enter setup menu |
| SUBTITLE | Switch subtitle files. |
| | Play/pause selected file. |
| | MULTI-FUNCTION: Refer to the instructions in the screen. |
| | Return to previous file. / Go to next file. |
| | Stop playback and return to the previous screen. |
| | Play films in slow mode. |
| L/R | Enable/disable Left/Right speaker. |
| AUDIO | Switch multilingual outputs. |
| ZOOM | Zoom video or image display on screen. |

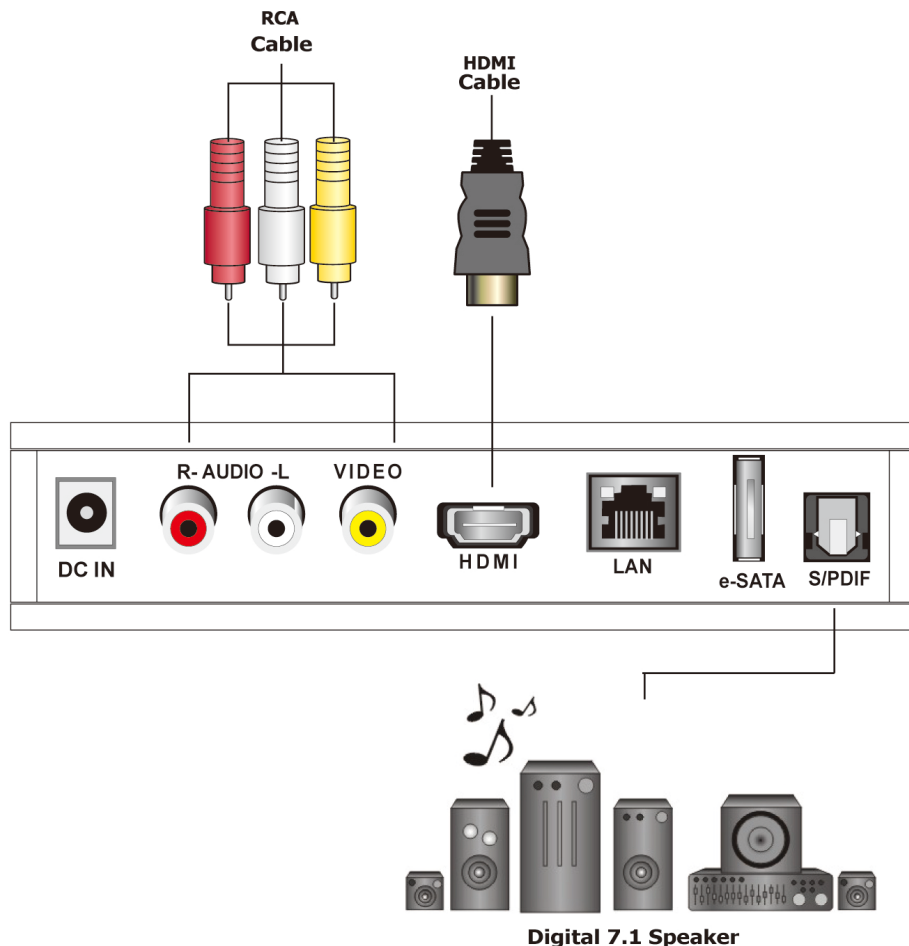
2

Installation

Cable Connections

Match the cables to the connections on your TV or display. Your choices of connection include:

| | |
|------------------|---|
| HDMI | For both audio and video output |
| RCA Cable | For composite video (yellow) and stereo audio (white and red) |
| S/PDIF | For audio output |

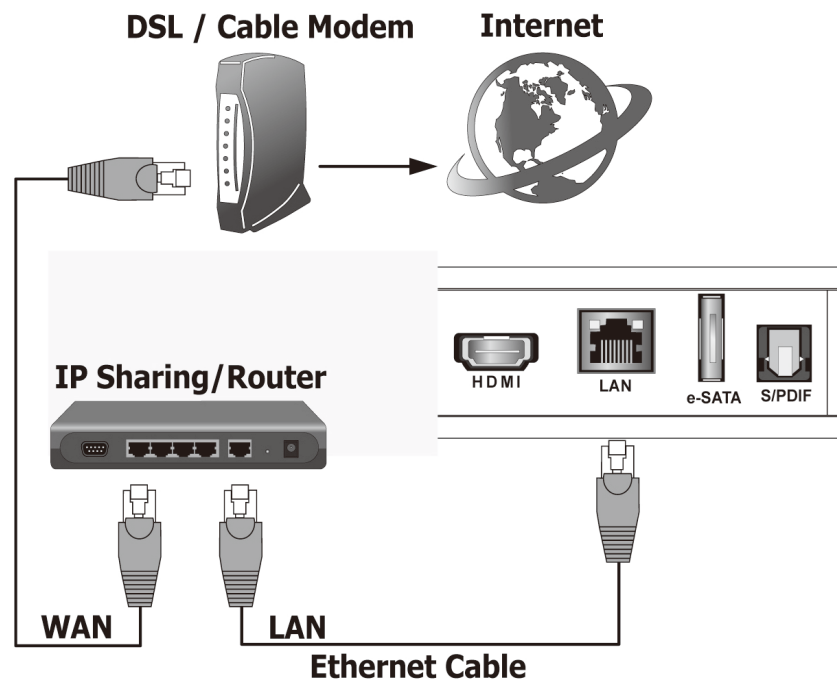


Internet Connections

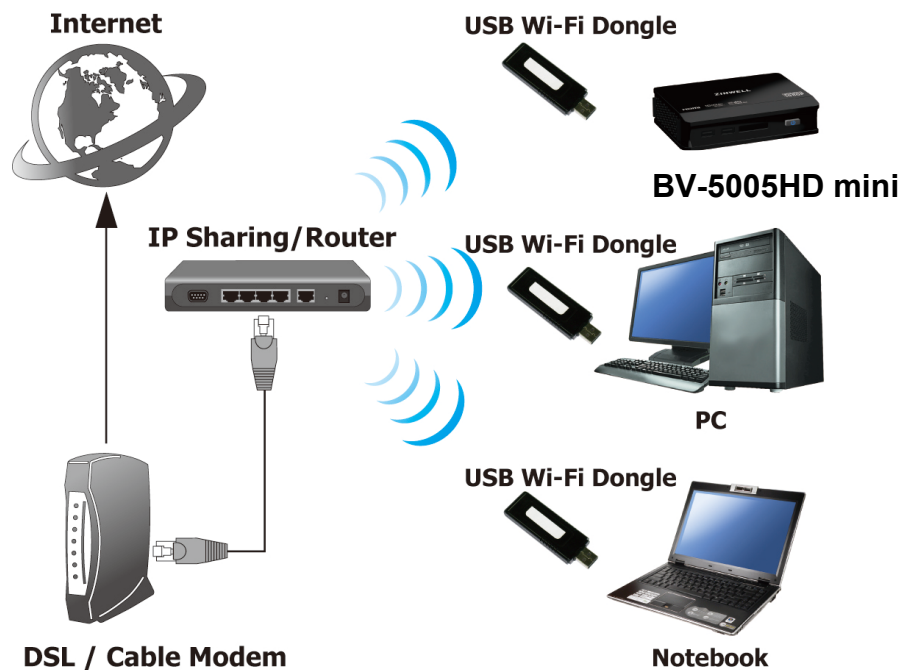
Connect the Product to the home network through wired LAN (Option A) or wireless LAN (Wi-Fi 802.11 b/g/n) (Option B)

A. Plug the Ethernet cable to the "LAN" jack on the rear panel of The

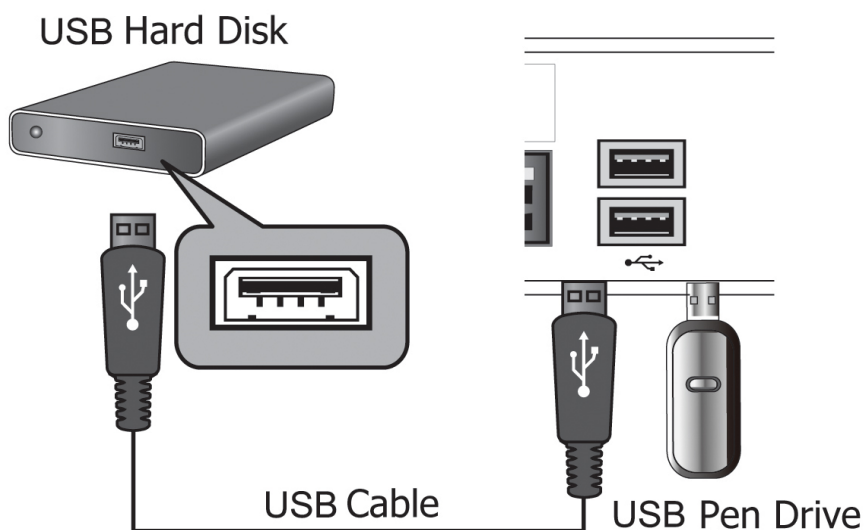
Product, for wired Internet connection. The Product will detect the network automatically.



- B. If you have the optional wireless USB dongle we approved, it is possible to connect The Product to the network wirelessly using Wi-Fi 802.11 b/g/n. You need to plug the USB dongle into one of the USB port on the front panel of the Product and connect to the internet through wireless IP sharing router. You may need to know your wireless AP, name of the router, and encryption keys in order to set up correctly.

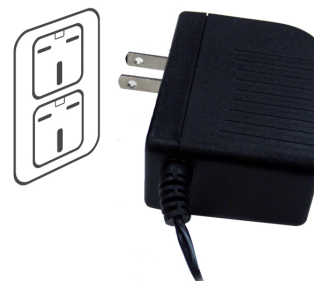


Connect USB Devices



Power Cord Connection

Plug one end of the power cord into the back of the Product and the other end into a power outlet. The Product will start automatically without pressing any other button once the power is connected.



Switch your TV Input/Source

After choosing the desired video and audio connection, you need to select appropriate video input mode using the remote control for your TV/display to switch to the corresponding video output by pressing the **Input/Source** button on the remote control.

3

Network Connections




| Remote | Description |
|---------------------|--|
| Direction Keys + | To access SETUP on the main menu. |
| Direction Keys + | Enter "Network" setup menu. |
| Direction Keys + | Select the item for adjustment. |
| | Go back to the previous page. |

If your wired network equipment such as the IP Sharing router or AP (Access Point), uses DHCP to assign IP address, by default the Product will automatically request the IP and other related information to set up The Product over the network in **DHCP** mode (under **Setup> Network >Wired**). If your network does not have DHCP server, switch to the **Static IP** mode (under **Setup> Network >Wired**) and set up various parameters manually. If you have a compatible wireless USB dongle, and have already set up the wireless router/AP according to the instructions that come with the dongle, please enter **Setup> Network> Wireless** mode to input the WEP or WPA keys.

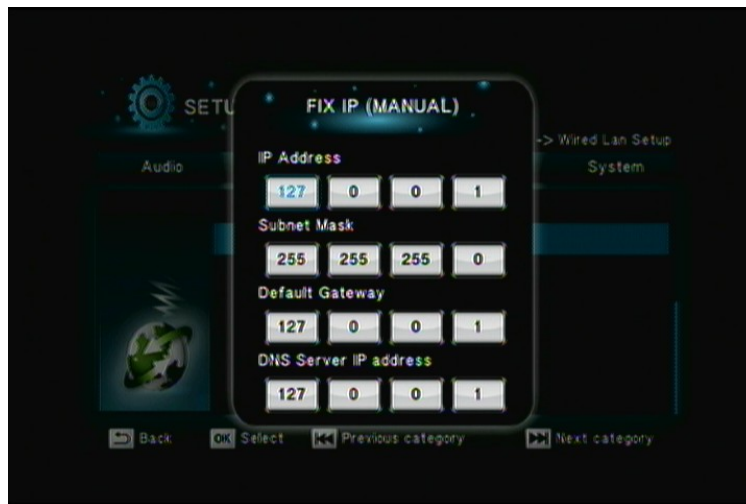
Wired LAN Setup


> DHCP



| Remote | Description |
|---|--|
| Direction Keys +  | Select "Wired" on the Network menu. Select "DHCP". The Product will automatically receive its IP address from a DHCP sever that is built into the access point or IP sharing router. |
| DHCP IP (AUTO) | DNS (AUTO)/ DNS Manual |

> FIX IP



| Remote | Description |
|---|---|
| Direction Keys +  | Select "Wired" on the Network menu. Select "FIX IP". |
| FIX IP (MANUAL) | Input the value IP Address , Subnet mask , Gateway , and DNS text box respectively. |

Note: Please acquire information of these setting values from your IS (Internet Service Provider) first.

Wireless Network Setup

| Remote | Description |
|---------------------|--|
| Direction Keys + | Select "Wireless" on the Network menu. The Product provides you multiple profiles for use across multiple networks. |



Note:

- ◆ The Product supports WEP, WPA-PSK and WPA2-PSK encryption modes only.
- ◆ Please use approved WI-FI dongle for wireless connection.

> Infrastructure (AP)



The Product performs a list of current wireless network connections- "SSIDs". Along with its security protocols (WEP/WPA2 key) and signal strength.

| | |
|---|--|
| Direction Keys + | Select your preferred wireless network connection. If an access key is required for the network connection, the keyboard will pop up. |
|  | To provide you multiple profiles for use across multiple networks. |
|  | To re-scan wireless AP |

Once the wireless network setup is successful, the "**SETUP SUCCESSFUL**" screen will appear.

> **Pear to Pear (Ad-Hoc Setup)**

Peer to Peer mode, which is also called Ad Hoc mode or computer to computer mode, is used to connect wireless client directly together, without the need for a wireless router or access point.



Direction Keys



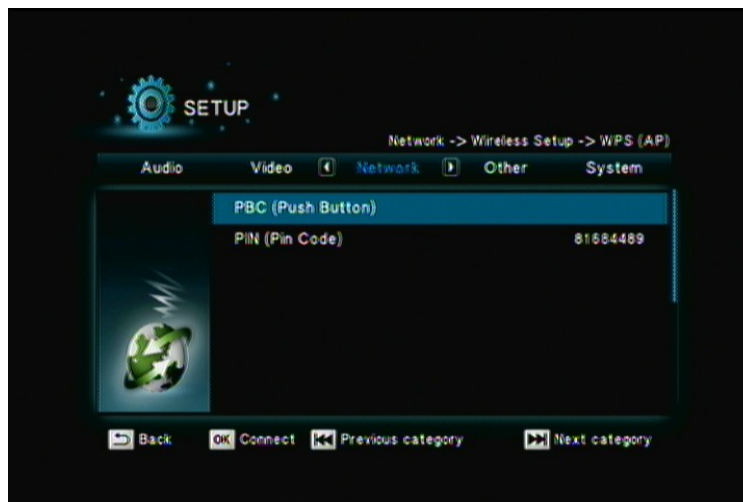
Select "Ad-Hoc" Setup.



Input SSID & IP Address

> **WPS (AP) > PBC (Push Button)**

In order to provide complete wireless connection, the product supports WPS (WiFi Protect Setup)



Direction Keys



Select "WPS" Setup.

Direction Keys



Select "PBC" Setup.

Press the WPS button on the AP within 1 minute after turn on this function.

> WPS (AP) > PIN (Pin Code)



Direction Keys



Select "WPS" Setup.

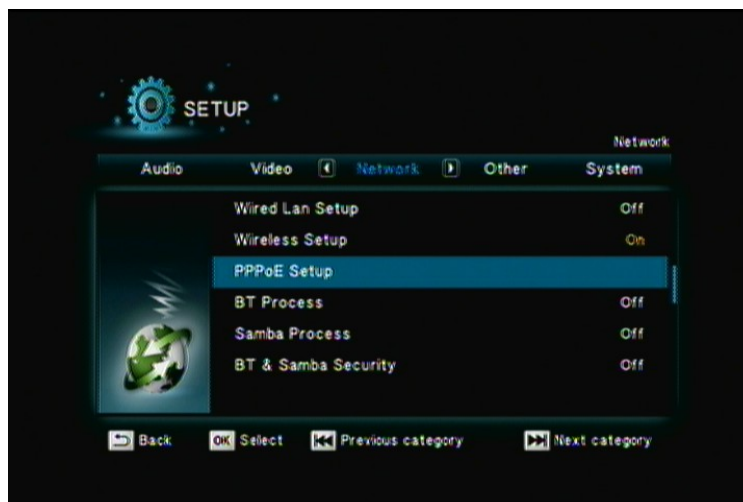
Direction Keys



Select "PIN" Setup.

AP will provide one set of PIN code.

PPPoE



Remote

Description

Direction Keys



Select "PPPoE" on the Network menu.

Direction Keys



Select Wired or Wireless





Input PPPoE User ID

BT Download

BitTorrent is the leading and the most common peer-to-peer file-sharing communications protocol. The Product's built-in BitTorrent client/engine allows this product to download media files to the connected USB device.



| Remote | Description |
|---|--|
| Direction Keys +  | Select "BT Process" on the Network menu. |
| Direction Keys +  | Off/ On |
| Enter IP of this product on IE browser to create the BT Download operation | |

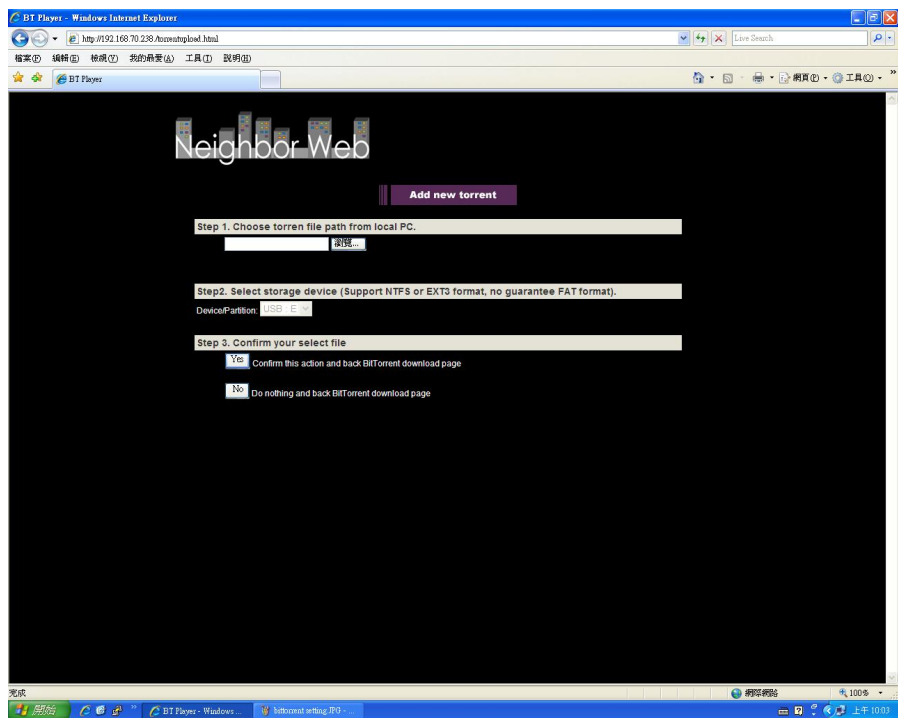
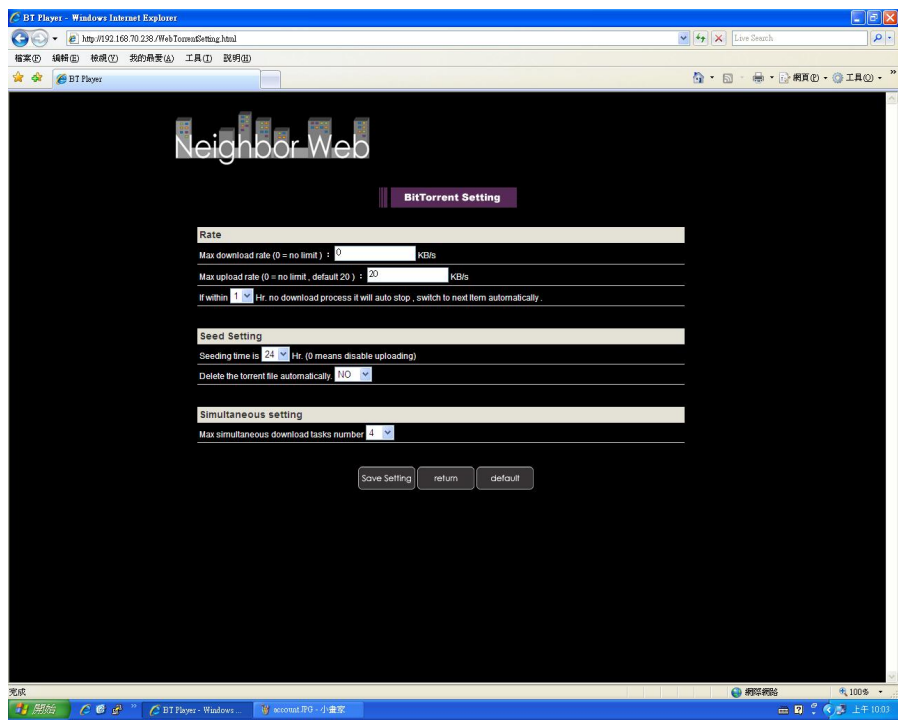
Caution: Please do not download illegal files or contents.

Caution: Strongly suggests to use another HDD for Torrent Download, DO NOT use the HDD that mixed important information.

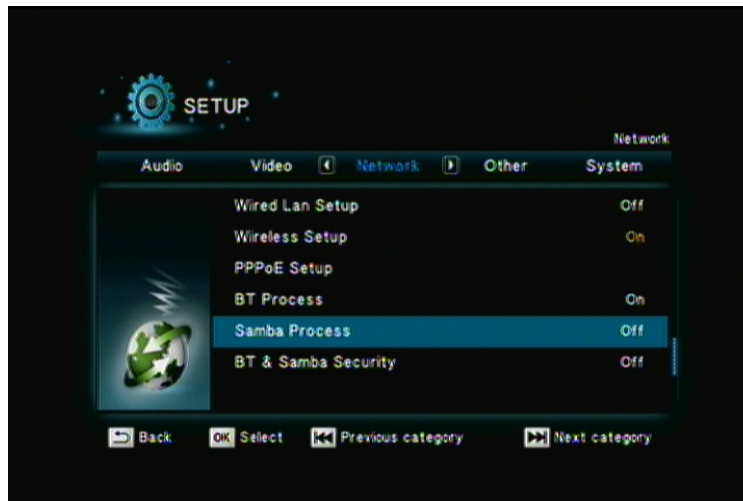






| Item | Description |
|-----------------|---|
| ▶ Start | Start downloading. |
| ■ Stop | Stop Downloading. |
| ✕Torrent | Delete torrent. |
| ✕Torrent & Data | Delete torrent and related data. |
| Refresh | Refresh screen. |
| ↑↓ | Adjust priority. |
| Setting | Adjust related setting. (Rate, Seed Setting, Simultaneous Setting) |
| Add new torrent | Add new torrent downloading. (from local PC, from storage device) |



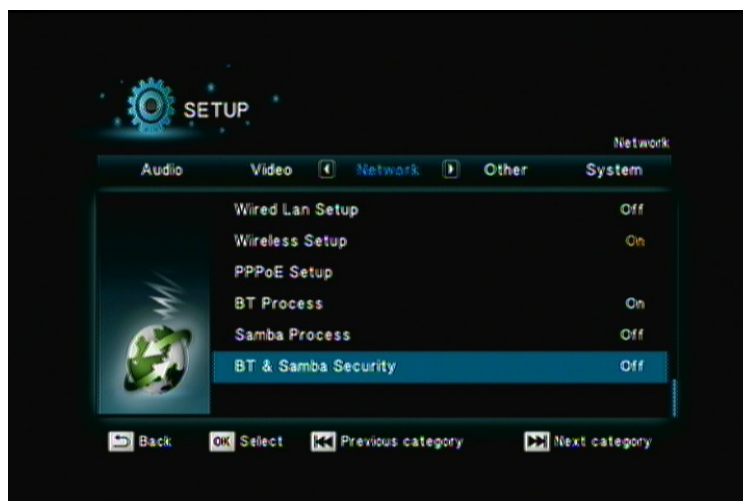
Samba Process (Simple NAS)





This function allow The Product as a simple NAS device, you can access folders located on The Product for viewing, renaming, moving and deleting by networking from your remote computer.

| Item | Options |
|---|---|
| Direction Keys +  | Select "Samba Process" on the Network menu. |
| Direction Keys +  | Off/ On |

BT & Samba Security



| Item | Options |
|---|---|
| Direction Keys +  | Select "BT & Samba Security" on the Network menu. |
| Direction Keys +  | Off/ On |

File sharing Configuration

To activate this feature, please make sure:

- ◆ The Product is connected to the network;
- ◆ The network is properly set up. For more information on this part, please refer to "Step 2" in "Setting up The Product" section, and "Network" under "Setup Menu".

To allow the Product to access folders on your computer, you need:

- 1) The Product already connected to the network
- 2) to designate the folders/files on your PC as shared resources.

Please refer to Microsoft's official website:

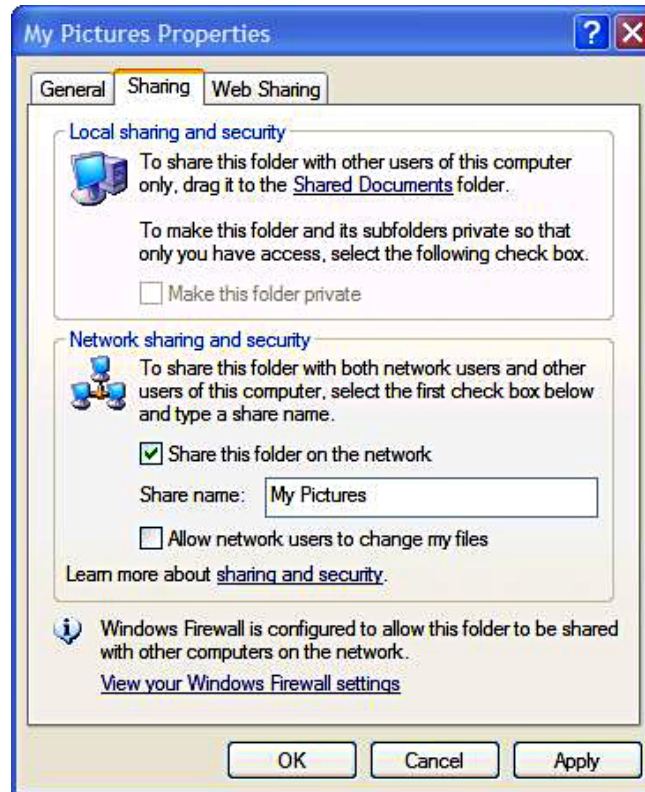
http://www.microsoft.com/windowsxp/using/networking/setup/home_net.mspix to see the initial and detailed process of Home Network Setup in Windows XP. Please refer to the following instructions to allow the Product to access the shared folders on the remote PC.

Step 1: Right click on the folder to be shared and select **Sharing and Security**.

Step 2: If this is the first time you intend to share a folder, Windows XP will prompt a warning message, urging you to use the Network Setup Wizard for safety purpose. Choose to either run the Wizard or do it yourself. XP will display another warning. If you want the firewall enabled, select **Use the wizard to enable file sharing**. Otherwise, select **enable file sharing**.

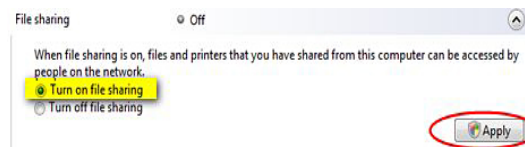
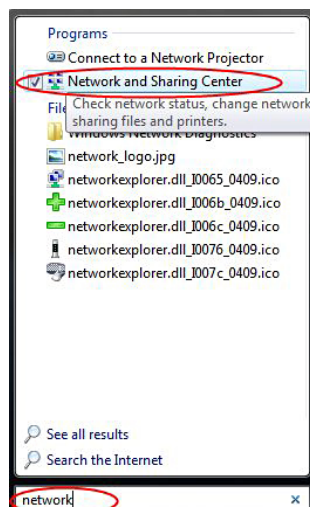
Caution: File sharing may lead to security problems since, by definition, it gives other users access to the content of a part of the hard drive. As a result, it is essential that you share only folders for which it would not be extremely important if their contents are

Step 3: You may now specify a “**Share Name**”, which will be used for users on the network to access the shared folder. The icon of the shared folder will be changed to showing a hand holding the folder.



If your operating system is Windows Vista, please refer to the following instructions:

- (1) Open the **Control Panel** and then open **Network and Sharing Center**.
- (2) Click the **down arrow** to the **right** of **File Sharing** to expand it.
- (3) Click **Turn on file sharing** and then click **Apply**.



You may also refer to **Setup** menu on the OSD screen of The Product to select wired or wireless connection.

File Sharing Configurations (With Windows Vista)

File sharing involves making the media content of one or more files / folders (on your PC) available through the network. By “enabling” this file sharing, you can view these files / folders (on your PC) to be accessed / viewed on your The Product (on the same network).

Caution: File sharing may lead to security problems since, by definition, it gives other users access to the content of a part of the hard drive. As a result, it is essential that you share only folders for which it would not be extremely important if their content were revealed (or destroyed), Furthermore, you are strongly advised against sharing a whole partition of your hard drive. This operation is specifically discouraged if you do not trust the other network users!

Enable “File Sharing” under Windows Vista

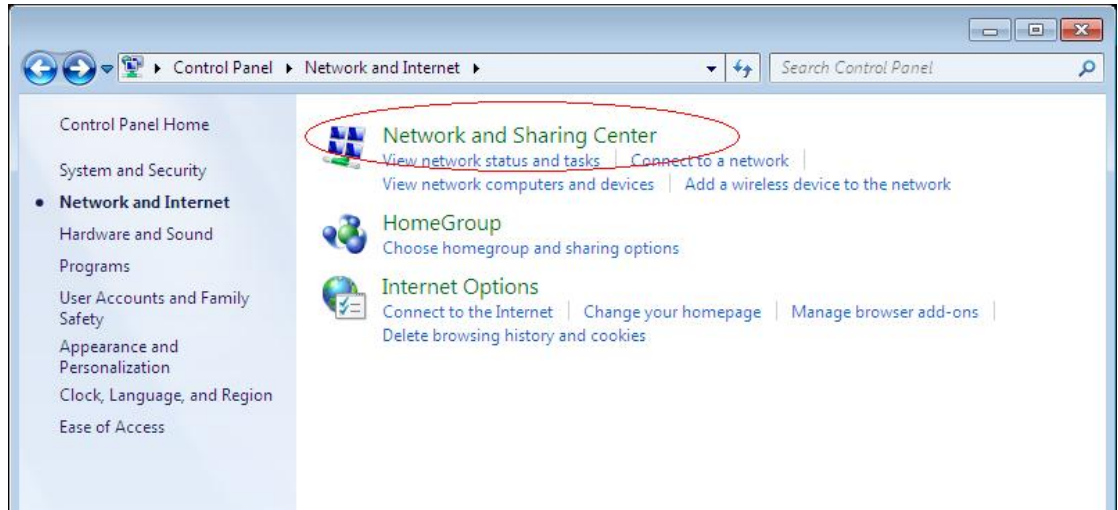
- ✓ On your PC, Click Start, right-click Network, and then click Properties..
- ✓ A new Window titled “Network and Sharing Center” pops up.
- ✓ In the “Sharing and Discovery” section of the Network and Sharing Center window, click the down arrow next to File sharing.
- ✓ Within the File sharing settings, click Turn on file sharing, and then click Apply.
- ✓ To enable public folder sharing, do the following:
 - In the Sharing and Discovery section of the Network and Sharing Center window, click the down arrow next to Public folder sharing.
 - Within the Public folder sharing settings, click “Turn on sharing so anyone with network access can open, change, and create files”.
 - Click Apply.

Once the “File Sharing” is enabled in Windows-Vista,

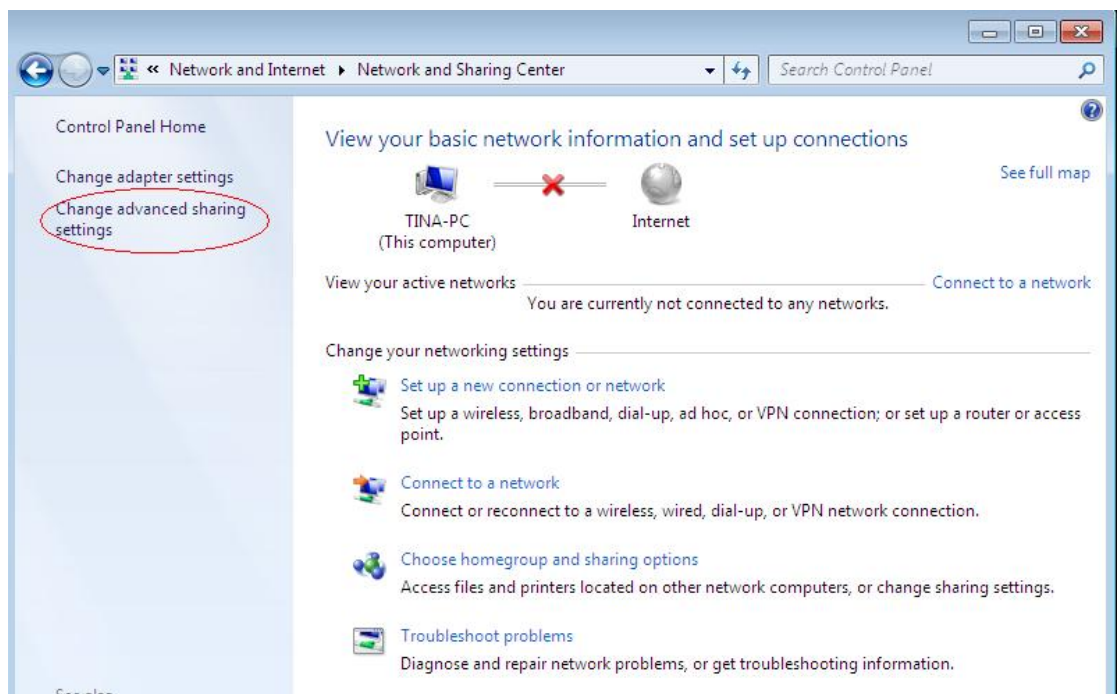
- ✓ Click Start, and then click Computer.
- ✓ In the Computer window, navigate to the folder containing the folder that you want to share.
- ✓ Right-click the folder that you want to share, and then click Share. The File Sharing window is displayed.
- ✓ Use the File Sharing window to select the Guest or Everyone account. This is equivalent to simple file sharing in Windows XP.
- ✓ When complete, click Share, and then click Done.

File Sharing in Windows 7

This instruction is based on Windows 7 professional version , the other versions are similar with this.



1. Click(Start)->(Control Panel)->(Network and Sharing Center)



2. Enter “Change advanced sharing setting”

Control Panel > Network and Internet > Network and Sharing Center > Advanced sharing settings

Change sharing options for different network profiles

Windows creates a separate network profile for each network you use. You can choose specific options for each profile.

Home or Work

Network discovery

When network discovery is on, this computer can see other network computers and devices and is visible to other network computers. [What is network discovery?](#)

☒ Turn on network discovery
☐ Turn off network discovery

File and printer sharing

When file and printer sharing is on, files and printers that you have shared from this computer can be accessed by people on the network.

☒ Turn on file and printer sharing
☐ Turn off file and printer sharing

Public folder sharing

When Public folder sharing is on, people on the network, including homegroup members, can access files in the Public folders. [What are the Public folders?](#)

☒ Turn on sharing so anyone with network access can read and write files in the Public folders
☐ Turn off Public folder sharing (people logged on to this computer can still access these folders)

Media streaming

When media streaming is on, people and devices on the network can access pictures, music, and videos on this computer. This computer can also find media on the network.

Media streaming is on.
[Choose media streaming options...](#)

File sharing connections

Windows 7 uses 128-bit encryption to help protect file sharing connections. Some devices don't support 128-bit encryption and must use 40- or 56-bit encryption.

☒ Use 128-bit encryption to help protect file sharing connections (recommended)
☐ Enable file sharing for devices that use 40- or 56-bit encryption

Password protected sharing

When password protected sharing is on, only people who have a user account and password on this computer can access shared files, printers attached to this computer, and the Public folders. To give other people access, you must turn off password protected sharing.

☐ Turn on password protected sharing
☒ Turn off password protected sharing

HomeGroup connections

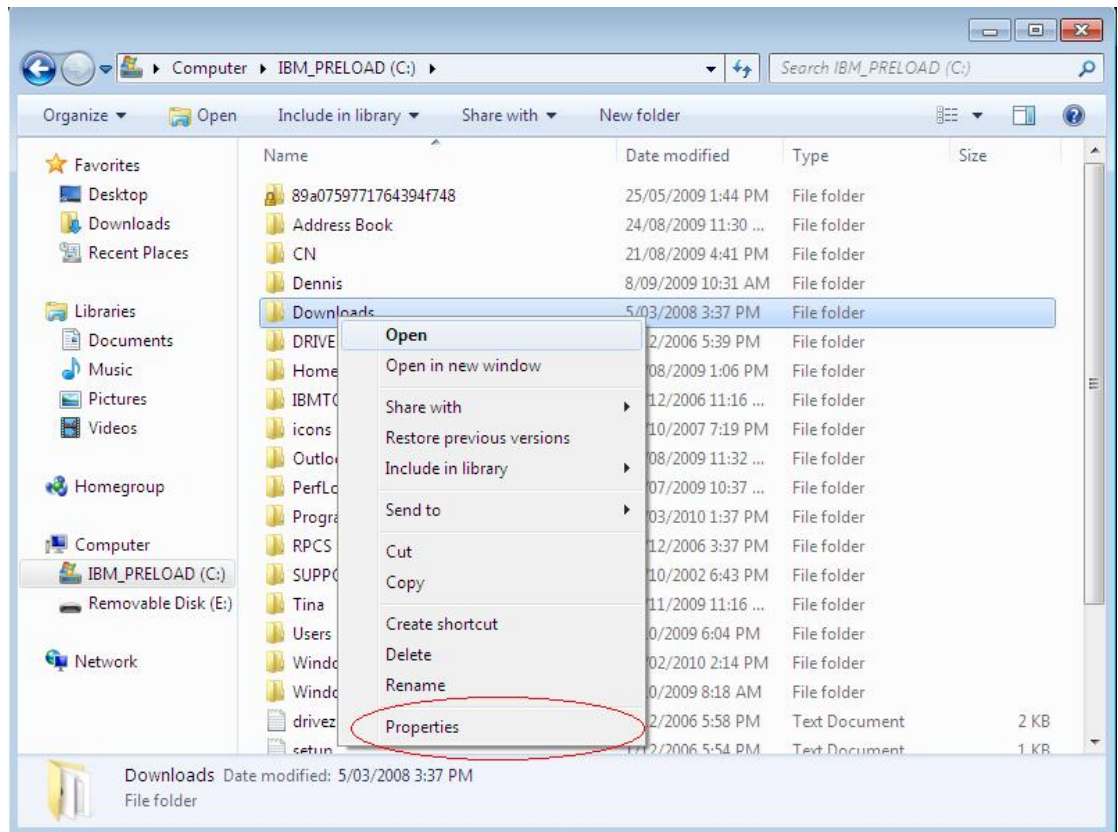
Typically, Windows manages the connections to other homegroup computers. But if you have the same user accounts and passwords on all of your computers, you can have HomeGroup use your account instead. [Help me decide](#)

☒ Allow Windows to manage homegroup connections (recommended)
☐ Use user accounts and passwords to connect to other computers

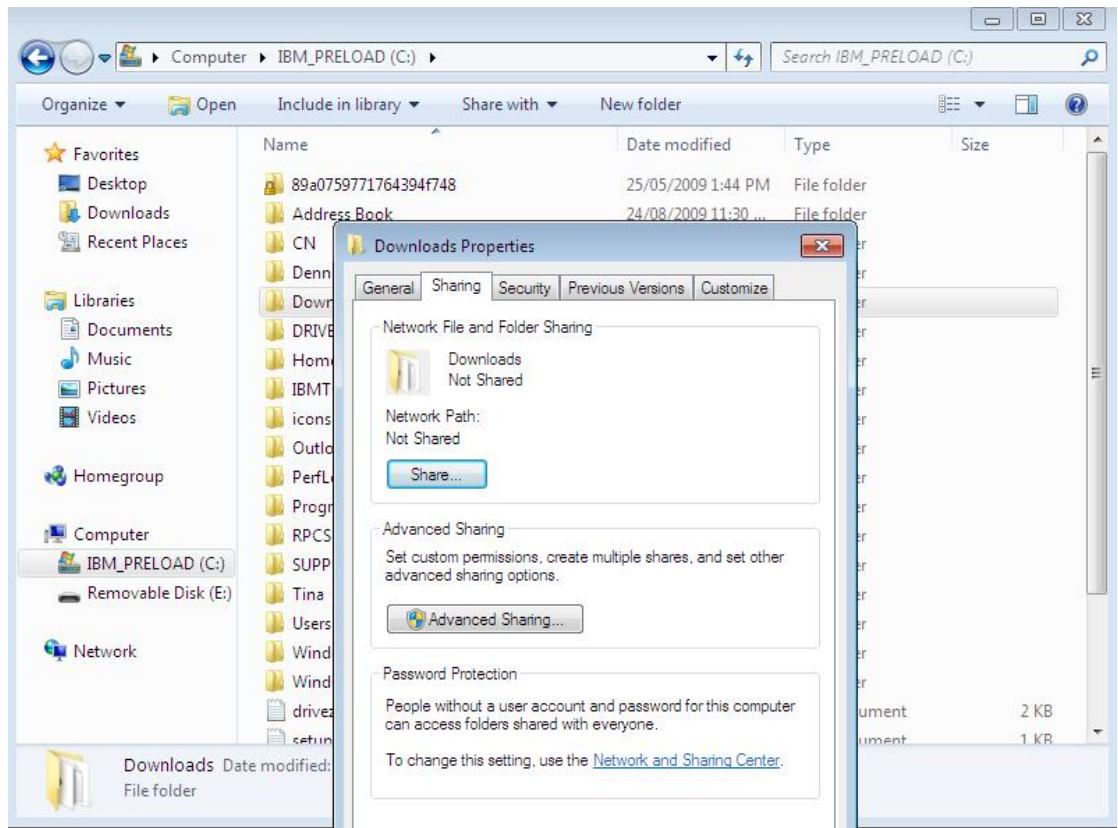
Public (current profile)

Save changes Cancel

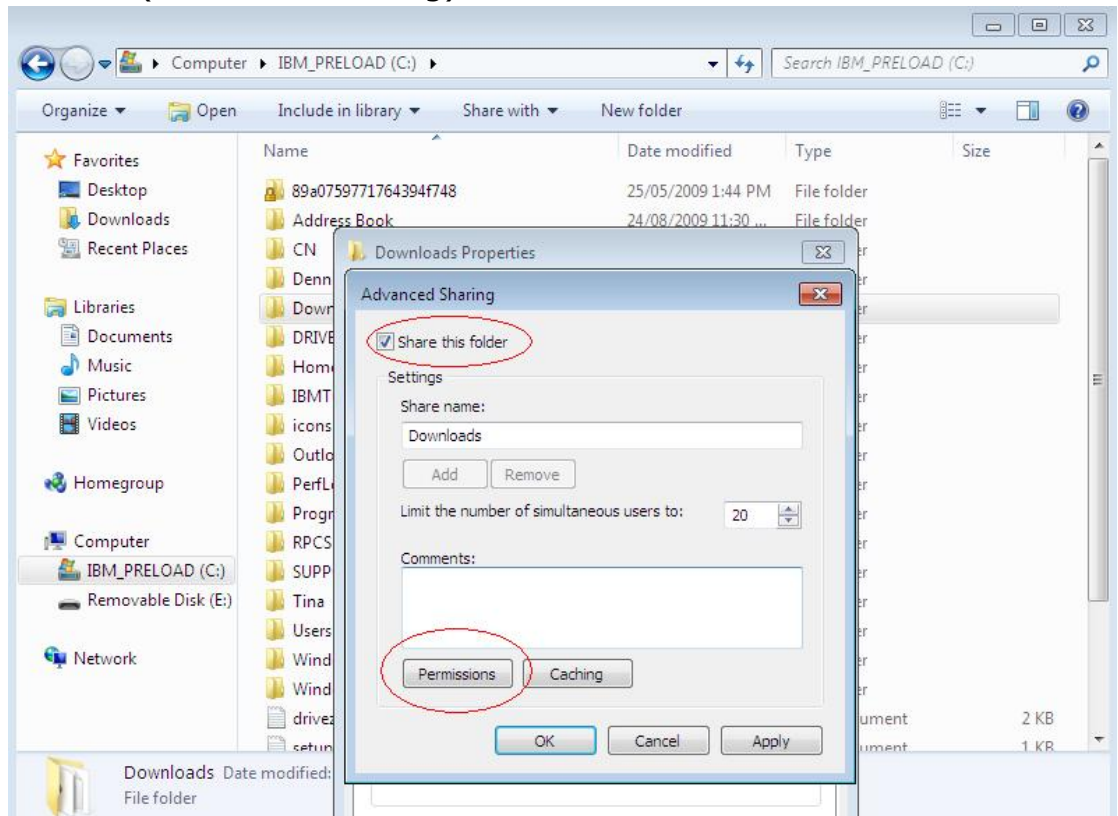
3. Set sharing options as above images.



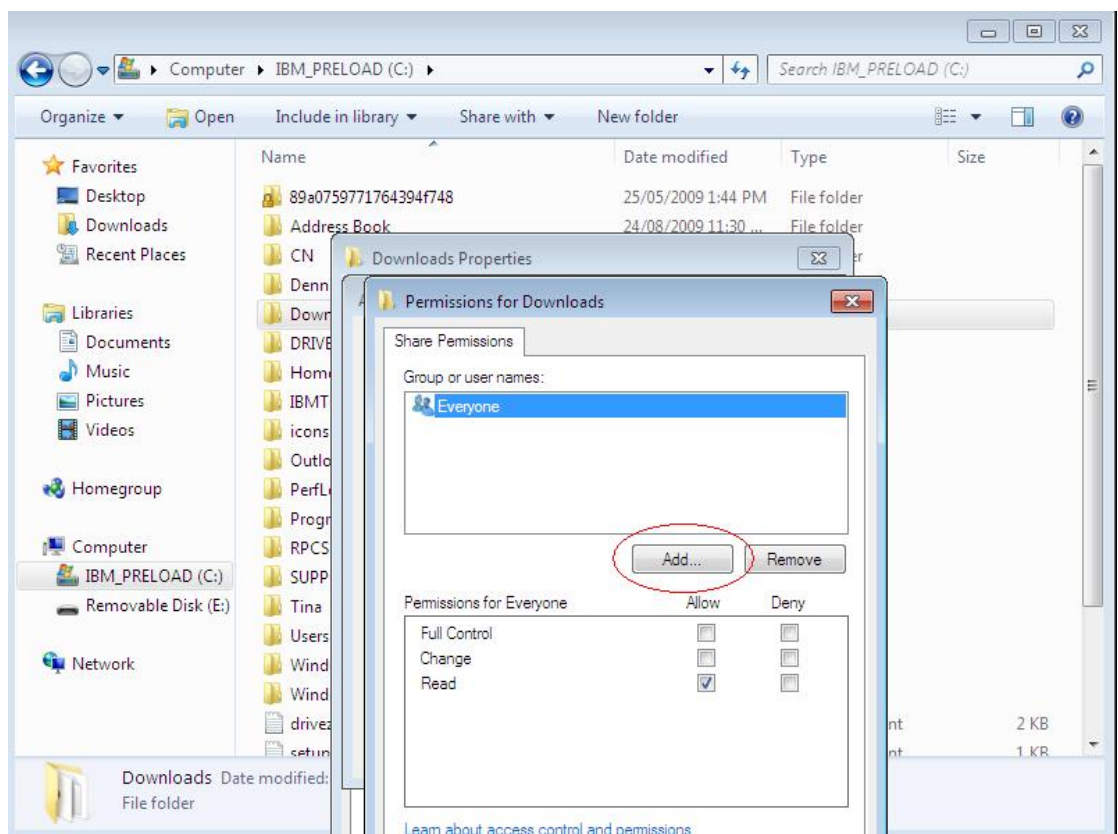
4. Select a folder which you want to share, click "properties".



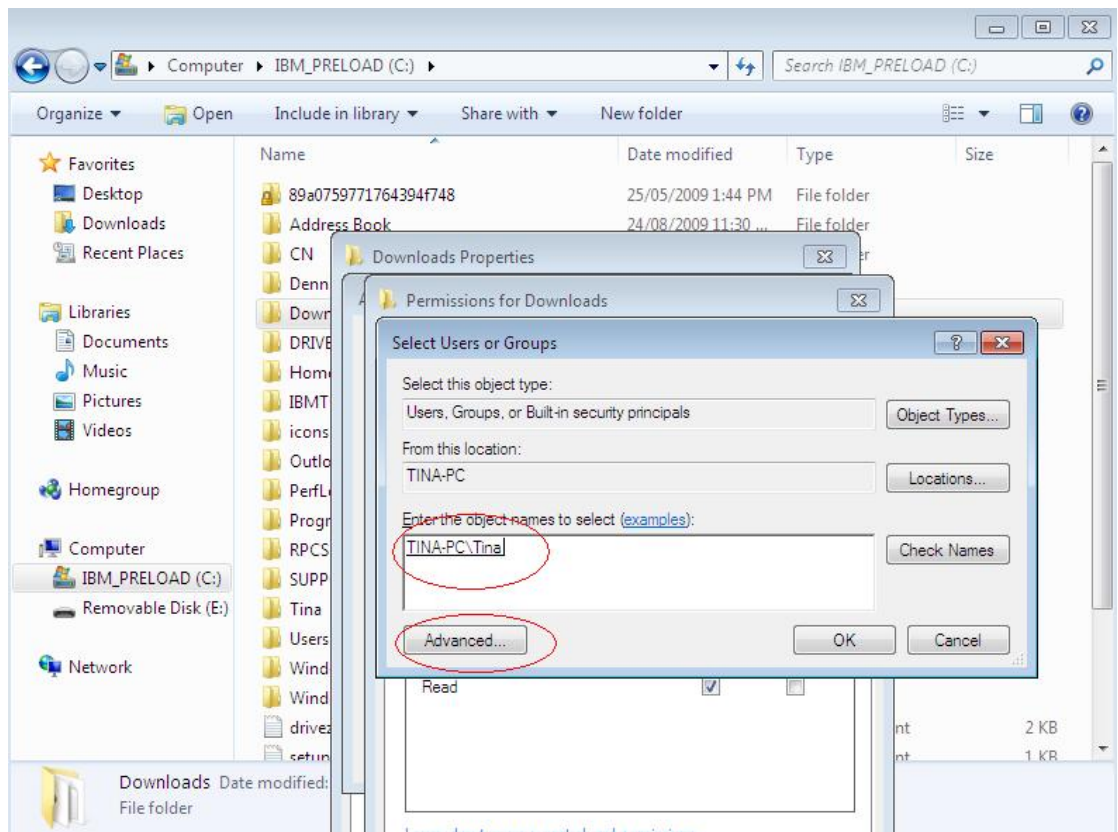
5. Click (Advanced Sharing)



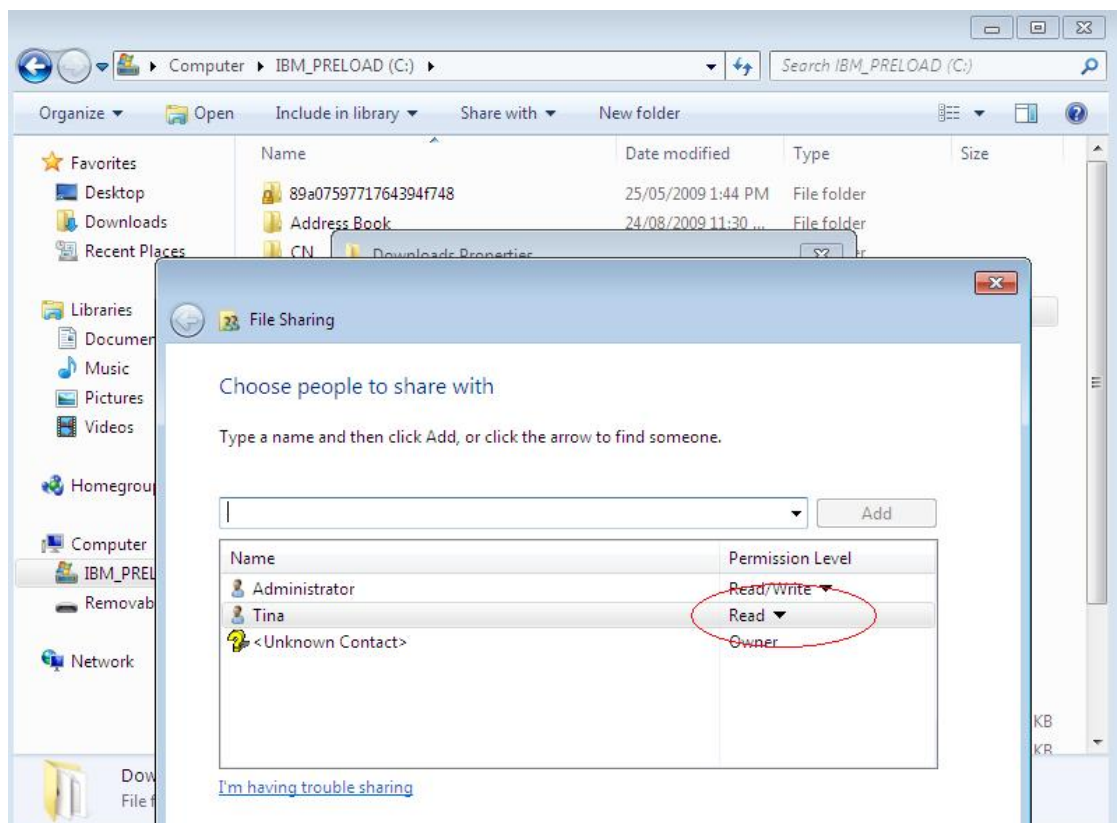
6. Add permission, click "share this folder".

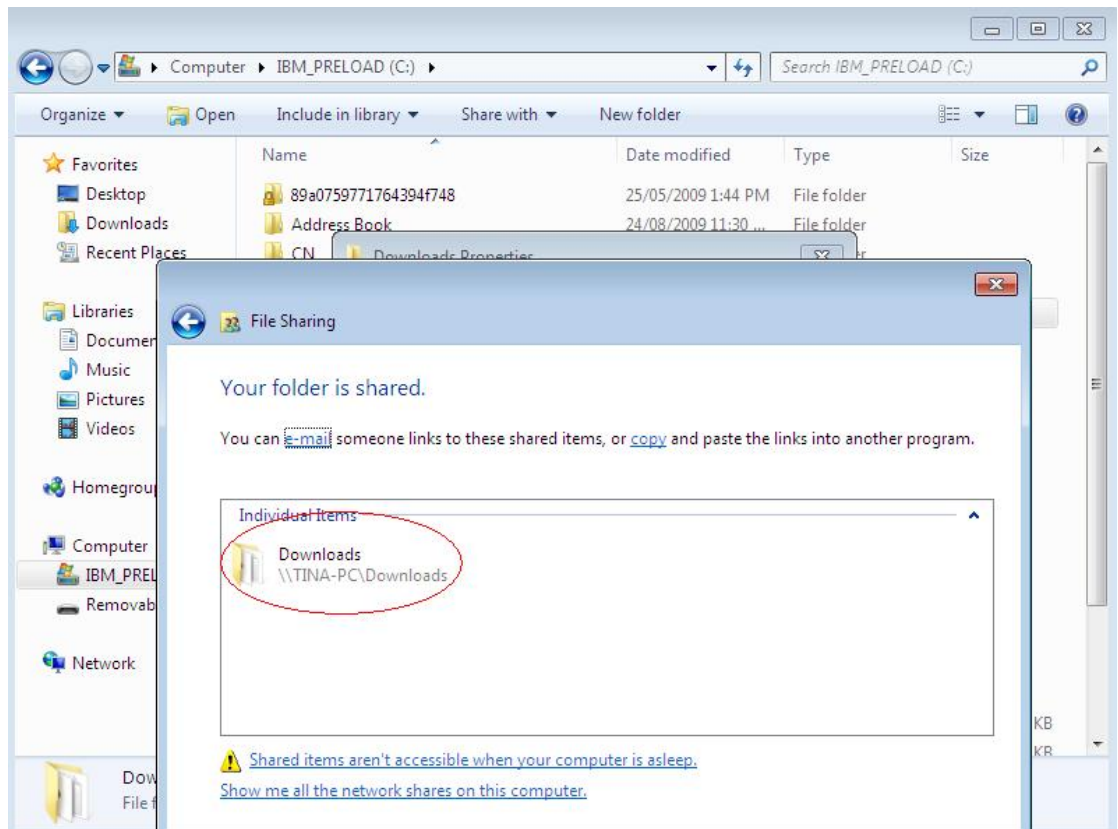


7. Add user's permission. If necessary, add GUEST in list.



8. Add user account which needs to access this share, if necessary, add GUEST account.





9. Click (Apply) & (OK) and complete setting up.

4 Play Media



| Remote | Description |
|---------------------|--|
| Direction Keys + | To access File Management on the main menu. |
| Direction Keys + | To select available media source. |
| | Go back to the previous page. |
| | Full screen mode. |

Note: Press key for available options to be displayed on the screen.

1. Display mode: Thumbnails, List, Preview.
2. Sorting mode: Movies, Photos, Music,

> USB Media

The Product searches and plays all available photos, music and video files on the external USB device.

Note: Depends on the specification of USB that each USB port provide 0.5A to USB device, please use with extra power-provided USB device if the USB device needs more electricity.

> Network Media

Connect The Product to your PC using an Ethernet cable. By connecting your PC to the Local Area Network, you can play the media files on the remote PCs. Before you do so, please confirm the network settings and file-sharing setup has been finished successfully. (See Chapter 3 for more information.)

Note: The limitation on the HD video content playback over the network:

The HD video quality may suffer when the video is streamed over the network. This is caused by intranet environment limitations. As a result, users might sometimes experience unsmooth video playback. Therefore, we recommend a wired Intranet for best playback quality, although the transmission over WiFi and PLC is supported.

> UPnP

UPnP (Universal Plug and Play) allows you to connect UPnP-enabled devices (available on the network) and share their content with the media player. When you enter UPnP application, The Product will automatically detect the PCs inside LAN. Please make sure that your PC supports Windows Media Player Version 11 and higher. Due to compatibility issue, some PCs may not support UPnP.

> Playlist and Album Setting

You can save your favorite music to playlist or photos to album when you are viewing files in USB device.







| Remote | Description |
|---|---------------------------|
|  +  | Save to Playlist or Album |

Note: The function only could be used with USB device.

Video Playback










| Remote | Description |
|---|---|
| Direction Keys +  | To access Movies on the main menu. |
| Direction Keys +  | Navigate the media file you want to play. |
|  | Go back to the previous page. |
|  | Full screen mode. |

Note: Press **D** key for available options to be displayed on the screen.

1. Display mode: Thumbnails, List, Preview.
2. Classified and Sorting mode: All Movies, Show DVDs, Go To Folder, Name, Size, Most Viewed.

Full Screen Mode









| Remote | Description |
|---|---|
|  | Play/pause selected file. |
|   | Rewind/Forward |
|  | Slow motion. |
|   | Return to previous file. / Go to next file. |
|  | Stop playback and leave full screen mode. |

Note: Press **D** key during playback, and the option list pops up on screen.

You can select Subtitle, change Audio, turn on the GOTO function, select DVD Menu (only available with ISO files), switch between different "Repeat modes", and adjust the Video Setting.


Music Playback



| Remote | Description |
|---|--|
| Direction Keys +  | To access Music on the main menu. |
| Direction Keys +  | Navigate the media file you want to play. |
|  | Go back to the previous page. |
|  | Play selected file. |
|  | Play/pause selected file. |
|   | Rewind/Forward |
|  | Stop playback and return to the previous display |

Note: Press  key for available options to be displayed on the screen.

1. Display mode: Search, Thumbnails, List, Preview.
2. Classified and Sorting mode: All Songs, Albums, Artists, Genres, Years, Playlists, Name.

Note: Press  key during playback, and the option list pops up on screen. You can change between repeat modes, and turn on the shuffle loop.






Note: Music will continue playing as the background music when you leave MUSIC PLAYBACK menu. Press  to stop playing.

Photo Playback







| Remote | Description |
|---|---|
| Direction Keys +  | To access Photo on the main menu. |
| Direction Keys +  | Navigate the media file you want to play. |
|  | Go back to the previous page. |
|  | Full screen mode. |

Note: Press **D** key for available options to be displayed on the screen.

1. Display mode: Thumbnails, List, Preview.
2. Classified and Sorting mode: Photo Directory, Leaf Folder View, Date View, All Photos, Albums, Name.

Full Screen Mode

| Remote | Description |
|---|---|
|  | Previous picture. / Next picture. |
|  | Rotate the viewing picture counterclockwise |
|  | Rotate the viewing picture clockwise. |
|  | Leave full screen mode. |

Note: Press **D** key during the photo slideshow, and the option list pops up on screen. You can select Slide Timing and Transition, change Repeat mode, turn on Shuffle Loop, Select Music and adjust Video Setting.

5

Internet Media

The product not only allows you watching video, listening to music and viewing photos, but provides various internet service.



Picasa

Fast and easy photo sharing from Google. Share with friends and family, or explore public Photos



Flickr

The product supports Flickr viewing, you also can search photos you want to see on this function.



YAHOO Weather

View the latest weather forecasts, maps, news and alerts on Yahoo! Weather.






YAHOO Finance





At Yahoo! Finance, you get free stock quotes, up to date news, portfolio, management resources, international market data, message boards.

6 | Setup



| Remote | Description |
|---|--|
| Direction Keys +  | To access SETUP on the main menu. |
| Direction Keys +  | Select the item for adjustment. |
|  | Go back to the previous page. |


System

| Remote | Description |
|---|--|
| Direction Keys +  | Enter "System" setup menu. |
| Direction Keys +  | Select the item for adjustment. |
| Direction Keys +  | Confirm the change. |
|  | Go back to the previous page. |
| Item | Options |
| Menu Language | English/ Traditional Chinese/ Japanese/ Spanish/ French/ German/ Italian/ Russian/ Dutch/ Simplified Chinese |
| Text Encoding | Unicode(UTF8)/ Simplified Chinese(GBK)/ Traditional Chinese(BIG5)/ Western/ Turkish/ Central European/ Greek/ Cyrillic/ Hebrew/ SE European/ Japanese(S-JIS)/ Korean(EUC-KR) |
| R/RW Auto-Play | Off/ On |
| Screen Saver | Timing: Off/ 2 Minutes/ 5 Minutes/ 10 Minutes Options: Default/ Photo Directory/ Flickr |
| DLNA DMR | Off/ On |
| Device Name | Pop up screen keyboard for typing |
| MiniKBD Language | English Lower/ Zhu Yin/ TChinese/ SChinese |
| Scan Storage | Auto Scan On/ Auto Scan Off/ Resume Scan |
| Resume Play | Off/ On |
| Factory Default | Yes/ No |





Note: R/RW Auto-Play means to play a DVD immediately when you insert it in the DVD drive.

Note: DMR(Digital Media Render) defined as output device, it can be control by other DLNA device. (only supports above Window Media Player 12)

Note: Depending on the capacity of the USB storage and number of files on disk, the time it takes to scan the storage device varies.

Note: "Resume Play" only works when pressing  key to stop video playback.

Audio

| Remote | Description |
|---|---------------------------------|
| Direction Keys +  | Enter "Audio" setup menu. |
| Direction Keys +  | Select the item for adjustment. |
| Direction Keys +  | Confirm the change. |
|  | Go back to the previous page. |
| Item | Options |
| Night Mode | Off/On/Comfort |
| HDMI Output | LPCM LPCM Multi-Ch RAW |
| SPDIF Output | LPCM RAW |

Note: **LPCM / RAW Mode**

LPCM mode means decoding the audio then and down-mixing it to 2 CH output.

RAW mode means passing the audio data through to the amplifier for audio decoding.





LPCM mode: Choose it when the content supports LPCM Multichannel.

Note: **"AUDIO SETUP-"Night Mode"** (aka Dynamic Range Control)

When the Night Mode is enabled the sound level of compatible audio soundtracks will be dynamically compressed. Dynamic range control (DRC) increases low-level audio content (such as the dialog in the movies), making it easier to be heard at low volume levels while reducing the intensity of higher-level audio content at the same time.

"When you're listening to movie dialogue late at night and have to turn down the volume during loud scenes, the dynamic range suffers and you may miss some dialogue and other sounds. With the Night Mode on, you can reduce the volume but still enjoy proper tonal balance and dynamic range."

Video





| Remote | Description |
|---|--|
| Direction Keys +  | Enter "Video" setup menu. |
| Direction Keys +  | Select the item for adjustment. |
| Direction Keys +  | Confirm the change. |
|  | Go back to the previous page. |
| Item | Options |
| Aspect Ratio | Pan Scan 4:3 Letter Box 4:3 16:9 16:10 |
| TV System | HDMI Auto/ NTSC/ PAL/ / 480P / 576P / 720P 50HZ / 720P 60HZ 1080i 50HZ / 1080i 60HZ/ 1080P 50HZ / 1080P 60HZ |
| Video Reduce Size | Off/ On |
| Digital Noise Reduction | Off/ Auto |
| 1080P 24Hz | Off/ On |

Note: When 1080P 24Hz is selected as the desired resolution, the product can output 24Hz video when the following conditions are met:

- 1.HDMI connected.
- 2.The TV supports 1080p 24Hz by EDID (Extended Display Identification)
- 3.The file is 23.976 or 24 fps.

Note: Turn "Video Reduce Size" mode "On" to reduce about 10% of image on screen (in case of overscan).

Other

| Remote | Description |
|---|---|
| Direction Keys +  | Enter "Other" setup menu. |
| Direction Keys +  | Select the item for adjustment. |
| Direction Keys +  | Confirm the change. |
|  | Go back to the previous page. |
| Item | Options |
| Version Info | Software version/ Custom ID/ Box ID/ Audio version/ Video version |
| Network Info | MAC Address/ IP Address/ Subnet Mask/ Default Gateway |
| Online Upgrade | Yes/ Cancel |
| USB Upgrade | Yes/ Cancel |

Note: The procedure of USB updating

1. Download software from official website to the root folder of the supported USB storage device.
(Please make sure place the files into the root directory)
 2. Plug the USB device into the product.
 3. Update software by following instructions shown on OSD.
- Please do not turn off the product during the software update. The process may take up to 5 minutes.

7

Troubleshooting

The following reference list represents situations that you may encounter, and methods for remedy. Please refer to this checklist prior to contacting qualified service personnel. You can also visit the FAQ page on **www.brite-View.com**

| Symptom | Remedy |
|--|--|
| No picture is displayed. | <ul style="list-style-type: none"> ● Check the power cord connection. Or connect the power cord to another power outlet. ● Are the VIDEO/ AUDIO cables or HDMI Cable loose or disconnected? Make sure one of connections is correct. ● Try the "SOURCE" button on the remote control of the external display/ TV, to select the correct input source. |
| When entering "PC Media" menu, the available PC list is not displayed. | <ul style="list-style-type: none"> ● Check your wired/ wireless connection to make sure that it's working properly. Use an Ethernet LAN cable to connect from the Network jack of the Product to the network router or Access Point. Or check the setting between your external USB wireless dongle and IP sharing. ● Check your Network Setting of the Setup menu. ● Check the setting on the shared folder/file on your computer. |
| On "USB Media" menu under the main menu, no USB device is searched. | <ul style="list-style-type: none"> ● Check USB device is already firmly connected. ● Check the format of your USB drive: is it in NTFS/EXT-3 format? |
| The BT multimedia files can't be downloaded. | <ul style="list-style-type: none"> ● For BitTorrent, users need to set up port forwarding on the TCP range 6881-6890 of Access Point or IP sharing. ● Your Internet bandwidth will limit BT download speed ● BT is a peer- to-peer download technology. It requires more people or torrents to share the files at the same time. |

